



RC-5A/RC-5A²

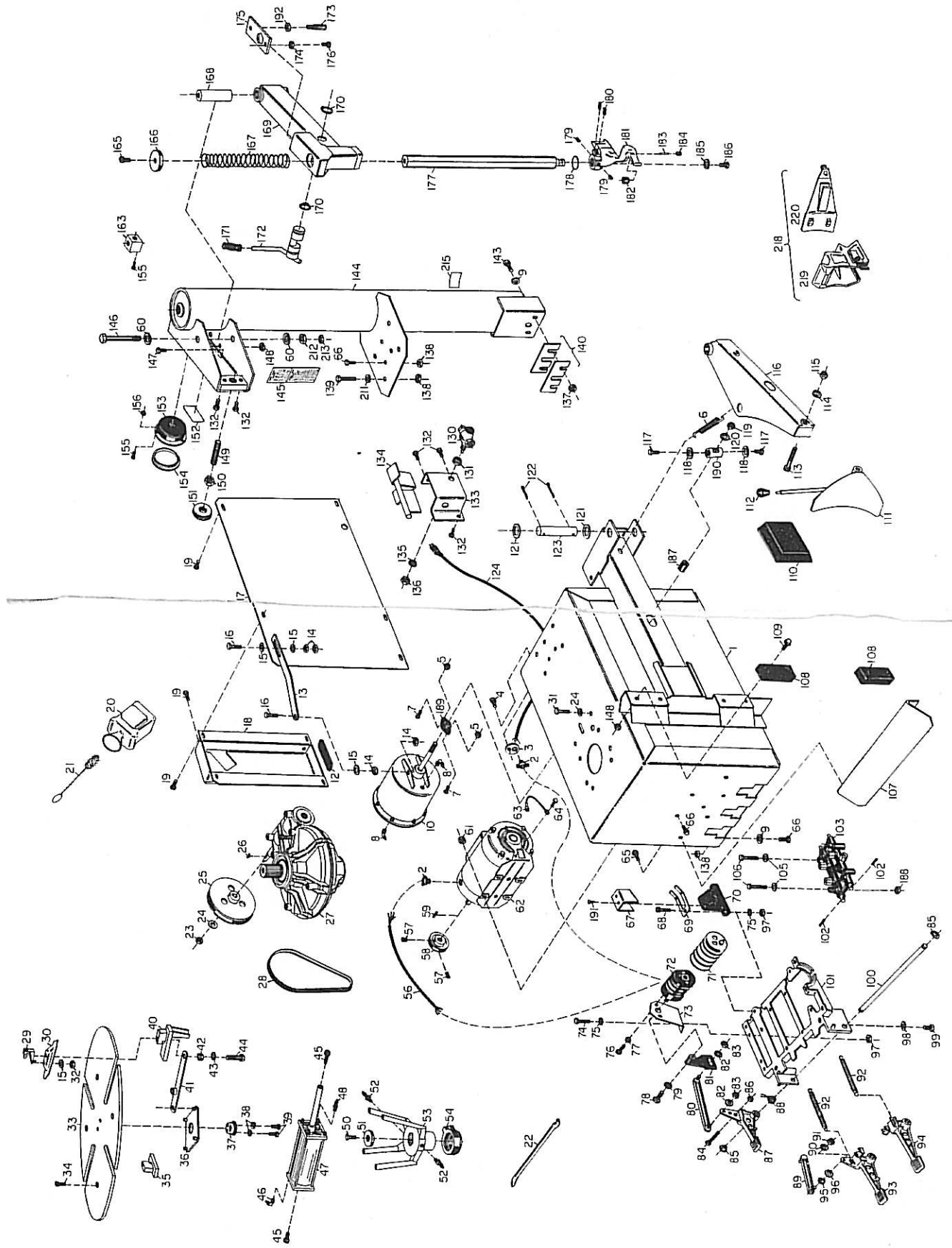


This Parts List is for
units with
Serial No. R.C-5A-1,000,001 and up
Manufactured by The Coats Co.
1601 J. P. Hennessy Drive
La Vergne, TN 37086
PHONE: 615-793-7533
TWX: 810-380-4372

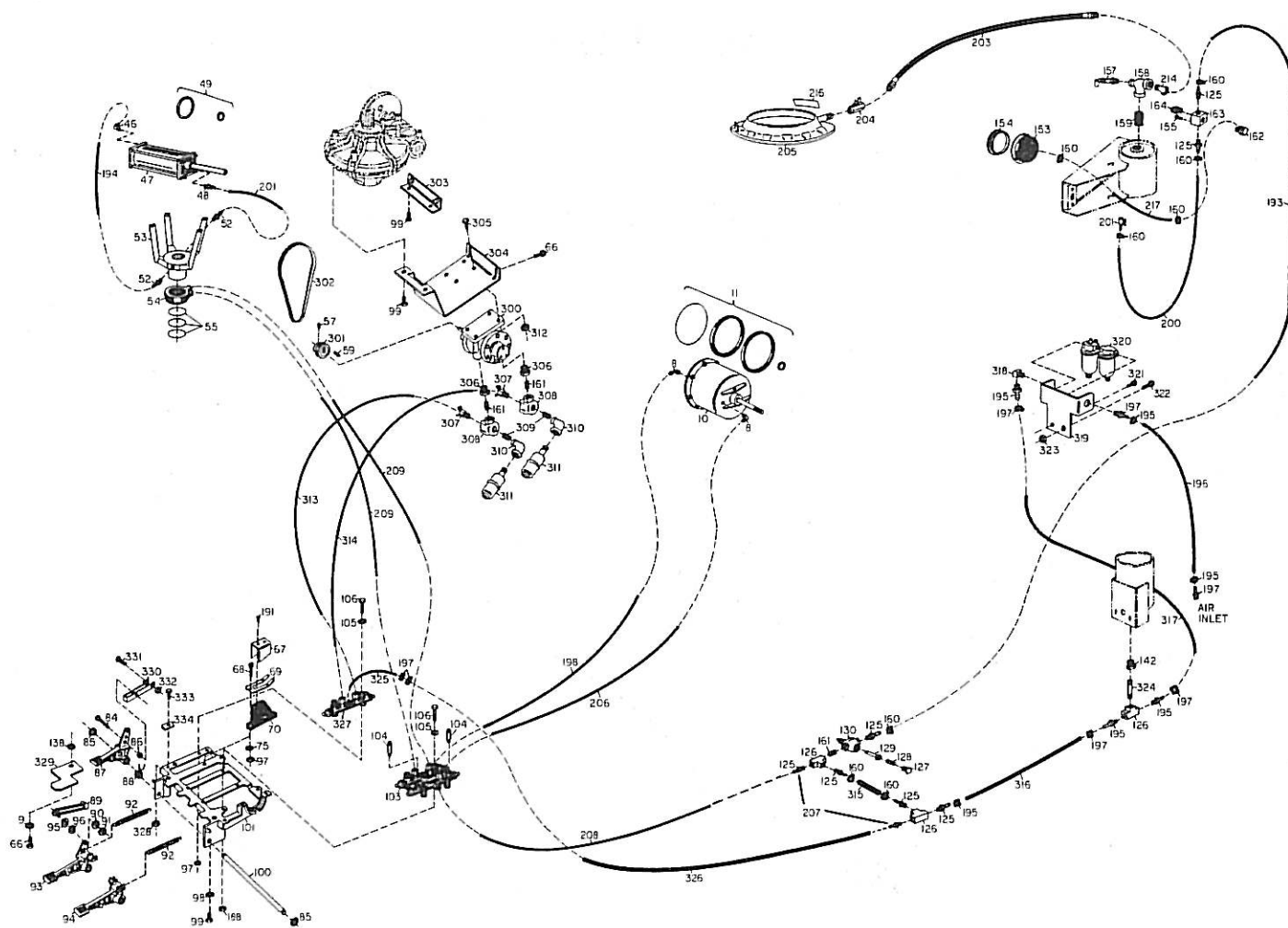
ORDER PARTS FROM YOUR DISTRIBUTOR OR JOBBER

Ref. No.	Part Number	Description	Ref. No.	Part Number	Description	Ref. No.	Part Number	Description
1	181042	Chassis	75	600211	Washer	148	181183	5/16" Nylon Lock Nut
2	150128	Cable Connector	76	600575	Screw 3mm	149	181027	Screw—Swing Arm Adjustment
3	181129	Bracket—Cable Connector	77	600195	Washer	150	181048	1"-14 Jam Nut
4	106034	5/16" Self-Tap Screw	78	600349	Screw	151	181026	Knob—Adjusting
5	180246	10-24 Kep Nut	79	600209	Washer	152	108059	Decal—Danger
6	180230	Bead Loosener Spring	80	425287	Connecting Rod	153	107980	Air Gauge w/Flange
7	180135	#10-24 x 3/4" F.H.M.S.	81	404283	Lever for Switch	154	107517	Gauge Lens, Screw On
8	418350	3/4" BSPT x 14mm Elbow Assy	82	600211	Washer	155	301082	#8-32 Pan Hd. Screw
9	000240	Washer	83	601257	Nut	156	301084	#8-32 Kep Nut
10	224136	Bead Loosener Cylinder	84	600368	Screw	157	104968	Safety Valve
11	181163	B.L. Cylinder Seal Kit	85	600025	Snap Ring	158	181139	3/4" NPT Tee
12	181128	Pad—Lift Tool Holder	86	600111	Nut	159	181140	3/4" NPT Close Nipple
13	180057	Cylinder Guide	87	325029	Switch Pedal	160	101428	Hose Clamp
14	600150	6mm Hex Nut	88	401270	Switch Control Spring	161	000580	3/4" NPT Close Nipple
15	600211	Washer	89	425014	Connecting Rod	162	000376	90 degree Fitting
16	600365	Screw—6mm x 35mm	90	600212	Washer	163	181039	Manifold
17	181160	Side Panel Assembly	91	601137	Nut	164	103737	Release Valve
18	181069	Lube Bil. & Lift Tool Holder	92	410928	Pedal Return Spring	165	428948	8mm x 25mm Knob Screw
19	106301	1/2" Self-Tap Screw	93	325031	Table Top Pedal	166	181074	Knob—Vertical Slide
20	106259	Lube Bottle	94	325032	Bead Loosening Pedal	167	423765	Spring
21	000491	Lube Applicator	95	419888	Elastic Washer	168	181038	Pivot Pin Swing Arm
22	422031	Bead Lifting Tool	96	309358	Washer	169	181045	Swing Arm
23	600152	Hex Nut, 10mm	97	600111	Nut	170	181095	1-3/8" Snap Ring
24	600213	Washer	98	600213	Washer	171	100979	Handle Grip
25	414344	Pulley, Transmission	99	600379	Screw	172	181082	Lock Handle Lift Cam
26	600667	Key	100	325583	Pedal Assy, Pivot Axle	173	181035	Lift Pin-Lock Plate
27	223814	Transmission	101	324273	Base Casting, Foot Pedals	174	181174	1/2"-13" Std. Hex Nut
28	181099	V-Belt	102	600976	Pin	175	181032	Lock Plate—Vert. Slide
29	323156	Clamp	103	228519	Double Valve Comp.	176	181158	1/2"-13 x 2 S.H.C.S.
30	323801	Cover Clamp Carrier	104	422682	Muffler	177	327729	Vertical Slide
31	601046	10mm x 55mm H.H.C.S.	105	600211	Washer	178	417824	O-Ring
32	601022	6mm Self Lock Hex Nut	106	600411	Screw	179	601274	10mm x 12mm Set Screw
33	323802	Table Top	107	181056	Guard Pedal	180	600946	10mm x 16mm Set Screw
34	600328	10mm x 20mm S.H.C.S.	108	181173	Front Pad B.L.	181	224778	Combo Tool Head
35	223789	Clamp Carrier	109	181181	5/16" x 1" B.S.H.C.S.	182	322738	Conical Roller
36	223793	Pivot Plate Assembly	110	181065	Center Pad	183	418892	Pin—Roller
37	323792	Pivot Cup	111	224000	Shoe	184	601091	6mm x 6mm Set Screw
38	600212	Washer	112	402177	Knob Shoe Handle	185	424275	Washer
39	600372	8mm x 16mm H.H.C.S.	113	324008	12mm Allen-Head Bolt	186	600379	10m x 20mm H.H.C.S.
40	223791	Clamp Carrier, Cyl. Mtg.	114	409550	Spring Washer	187	424142	Bumper
41	223785	Pivot Link	115	422255	Nut, 12mm	188	600111	Nut
42	323796	Pivot Spacer	116	224003	Bead Loosener Arm	189	424144	Cyl. Guide Bushing
43	323795	Washer	117	600372	8mm x 16mm H.H.C.S.	190	324141	Pin
44	423819	12mm x 75mm H.H.C.S.	118	323901	Washer	191	600641	Screw
45	601251	12mm x 20mm S.H.C.S.	119	601242	18mm x 1.5mm Pitch Lock Nut	192	181113	1/2"-13 Jam Nut
46	414842	90 degree Threaded Connector	120	600896	18mm Machine Bushing	193	103734	1/4" x 58" Hose
47	223810	Cylinder, Table Top	121	601045	Washer	194	180163	6mm x 16-1/2" Nylon Tube
48	417408	Straight Fitting Assy. BSPT	122	102278	1/2 x 1" Cotter Pin	195	101427	Hose Clamp
49	181162	Table Top Seal Kit	123	323903	Bead Loosener Arm Pin	196	181147	3/4" x 16-1/4" Hose
50	601216	16mm x 35mm H.H.C.S.	124	180302	Cord Molded Plug	197	101898	3/4" Hose Fitting
51	323817	Washer, Table Top	125	000378	1/4 Brass Straight Fitting	198	181175	10mm x 42" Nylon Tube
52	417408	Straight Fitting Assy. BSPT	126	000643	1/4 Tee	200	181121	1/4" x 38" Hose
53	223799	Table Top Spider	127	105671	End Cap (1/4 Valve)	201	410419	Air Chuck
54	323800	Rotary Coupling	128	102468	Poppet Spring	202	120271	1/4" x 9" Hose
55	423781	O-Ring	129	104649	Poppet (1/4 Valve)	203	181116	43" Hose Assy.
56	180178	Motor Cable Assembly	130	104600	Valve Comp.	204	180452	3/4" Valve
57	180217	5/16 x 3/8 Soc. Set Screw	131	104673	Bushing (1/4 Valve)	205	181152	Air Ring Assy
58	180046	Motor Pulley	132	106300	3/8 Self-Tap Screw	206	181176	10mm x 16-1/4" Nylon Tube
59	180558	Key Motor	133	181053	Bracket, Inflation Pedal	207	414867	Fitting—1/4" B.S.P.T. x 8mm Tube
60	181182	3/4" Machine Bushing Black	134	181055	Pedal, Inflation	208	181159	8mm x 33-1/2" Nylon Tube
61	106303	3/8 Whiz Lock Nut	135	104613	3/8" Ext. Lock Washer	209	180173	6mm x 25" Nylon Tube
62	181100	Motor	136	104611	3/8" Jam Nut N.F.	210	180162	6mm x 12-1/2" Nylon Tube
63	180560	Ground Jumper	137	120424	3/8" Washer Head Nut	211	101018	3/8" Machine Bushing
64	120455	#10-24 Self-Tap Screw	138	106303	3/8 Whiz-Lock Nut	212	181180	3/4" Grade 8 Heavy Hex Nut
65	106300	3/8 Self-Tap Screw	139	181137	3/8" x 2-1/4" H.H.C.S.	213	143598	3/4" Reg Hex Nut
66	106302	3/8 Whiz-Lock Screw	140	181161	Shim Kit	214	181178	3/4" NPT x 45" St. El
67	325018	Bracket	141	107234	1/4-3/8 Brass Fitting	215	181177	Air Pressure Warning Decal
68	600312	Screw	142	101312	Reducing Bushing	216	181150	Decal-Air Ring Warning
69	325019	Spring, Leaf	143	107715	3/4" x 1-1/2" H.H.C.S.	217	000481	1/4" x 6" Hose
70	425020	Cam	144	181044	Tower—Air Receiver	218	181257	Motorcycle Kit Comp.
71	420776	Switch Cover	145	180060	Decal—Warning	219	225659	Motorcycle Clamps
72	421523	Switch	146	181172	3/4" N.C. x 7-1/2" Bolt	220	225640	Motorcycle Shoe Adapter
73	325288	Support for Switch	147	120325	5/16" x 1" S.W.H.S.			
74	600362	Screw						

When ordering parts always give the following information:
(1) Part Number (2) Description (3) Serial Number of Your Machine



ALL AIR RC-5A²



REF. NO.	PART NO.	DESCRIPTION
300	181190	Air Motor
301	181204	Sheave
302	181205	V-Belt
303	181200	Angle W/Assy
304	181196	Bracket—Air Motor
305	120325	5/16 x 1" S.W.H.S.
306	181203	1/2-1/4 Reducing Bushing
307	181194	St. Male Conn. 3/8 Tube—1/4 NPT.
308	181191	Valve—Quick Exhaust
309	181207	3/8 NPT Close Nipple
310	181195	1/2-3/8 NPT Reducing ELL
311	181206	Muffler
312	000525	5/16" Lock Nut
313	181215	10mm x 22" Nylon Tube
314	181214	10mm x 20" Nylon Tube
315	181213	1/4" I.D. x 3.00" Hose
316	181212	3/8" I.D. x 4" Hose
317	181211	3/8" I.D. x 18" Hose

REF. NO.	PART NO.	DESCRIPTION
318	000372	1/4" NPT St. ELL
319	181198	Bracket—Filter/Lubricator
320	181192	Filter/Lubricator Assy.
321	107413	3/8-16 x 1" Self Tap Screw
322	180301	1/2-13 x 1" S.W.H.S.
323	140567	1/2-13 Serrated Nut
324	181202	1/4 NPT X 2" Nipple
325	181208	8mm x 4" Nylon Tube
326	181218	3/8" x 21" Hose
327	229965	Valve—Air Motor
328	601022	6mm Hex Nut
329	181193	Stop-Pedal
330	329056	Link—Rotation Pedal
331	600291	4mm x 30mm H.H.C.S.
332	601018	4mm Hex Nut
333	600362	6mm x 20mm H.H.C.S.
334	329058	Reverse Pedal Stop

RC-5A² SPECIAL INSTRUCTIONS

The RC-5A² uses only one power source. Compressed air at 110 to 175 PSI should be supplied to the air inlet hose at the rear of the machine.

(Recommended compressor size is 5 horsepower capable of 14-15 CFM at 150 PSI).

Service the Filter Lubricator Unit Weekly:

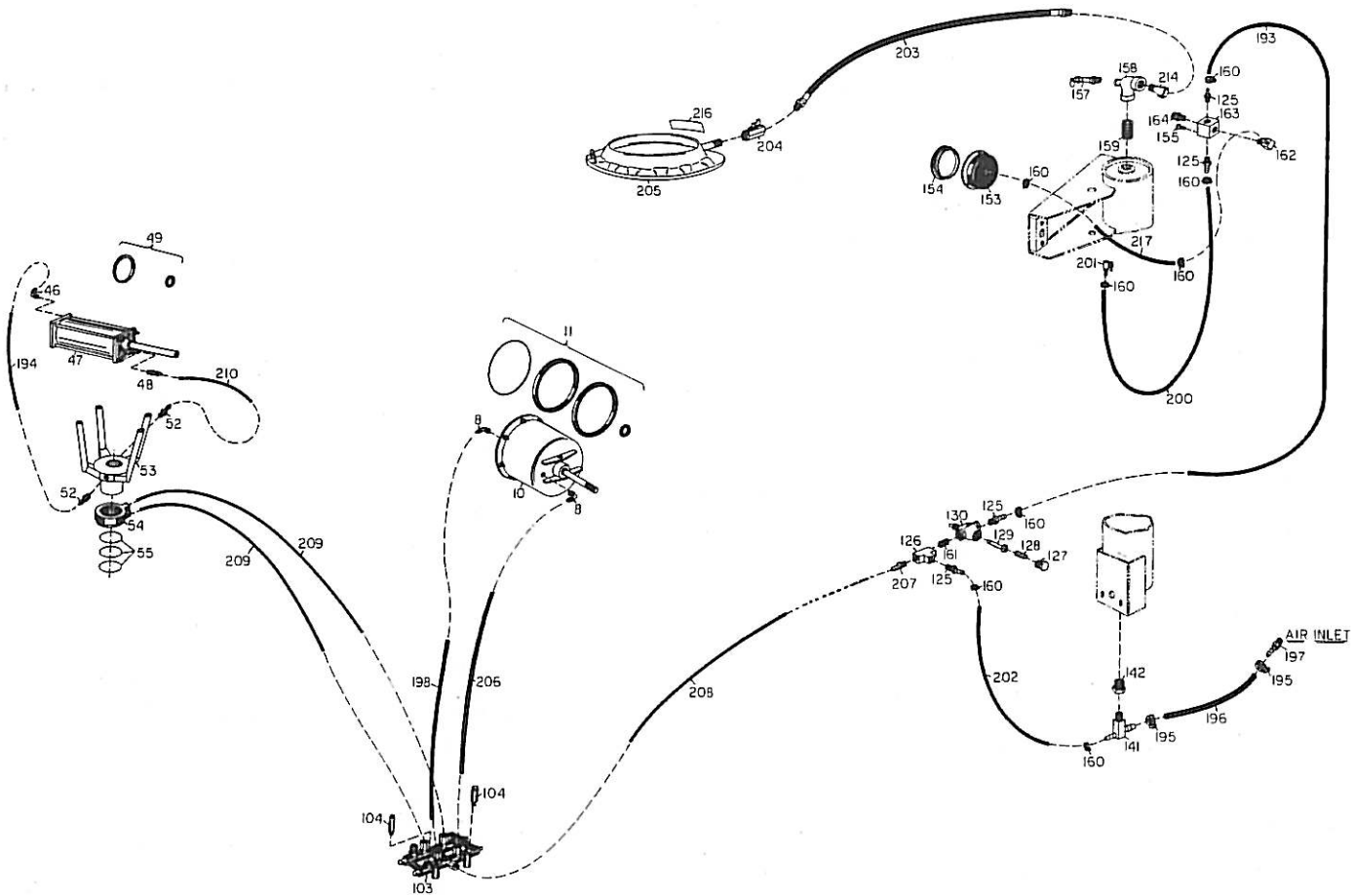
1. Refill lubricator with SAE 10W non-detergent oil as required.
2. Drain filter unit by turning knob on bottom of bowl.

TRANSMISSION LUBRICATION GUIDE

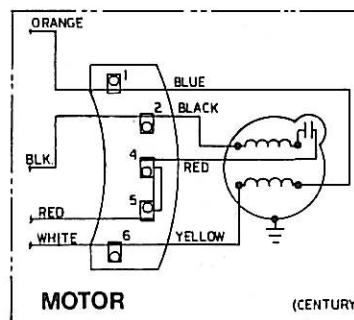
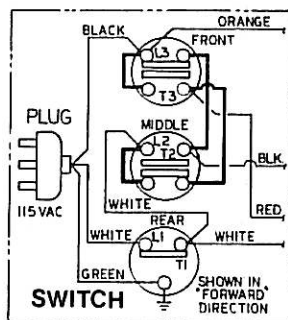
Check the fluid level in the tabletop transmission using the oil check dip stick. If any fluid shows on the dip stick it is properly filled. If necessary, add high quality SAE 80/90 gear lubricant until it shows on the dip stick.

ELECTRO/PNEUMATIC RC/5

AIR SYSTEM



ELECTRICAL SYSTEM



AIR GAUGE RECALIBRATION

1. Remove lens assembly from gauge.
2. Loosen two screws located on edge of dial face in the 10 o'clock and 2 o'clock positions. **Caution:** Do not loosen over three turns.
3. Pressurize gauge with 32 psi measured from a standard gauge.
4. Rotate top dial until 32 psi graduation is in line with the pointer.
5. Tighten the two screws—check alignment of pointer with graduation.
6. Replace lens.