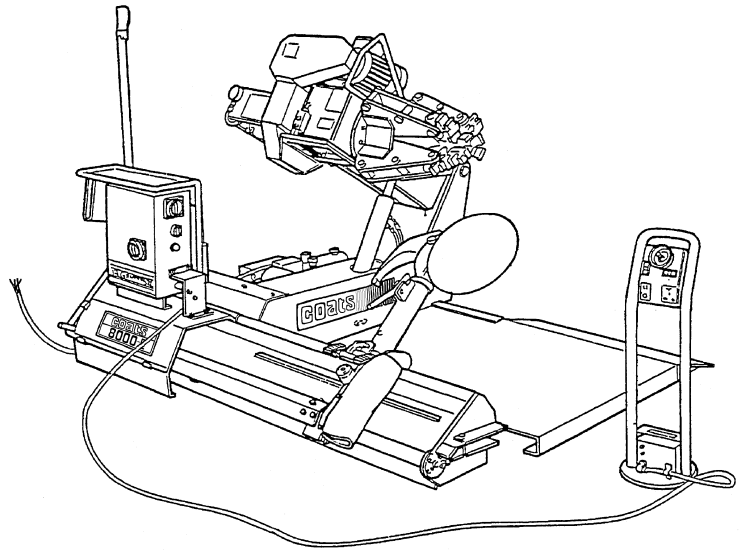


**COATS
BADA**

AMMCO

COATS H.I.T. 8000E

The Heavy-Duty Truck Tire Changer



Parts Identification

READ these instructions before placing unit in service. KEEP these and other materials delivered with the unit in a binder near the machine for ease of reference by supervisors and operators.

Manual Part No.: 183903
Revision Date: 2/99

HENNESSY INDUSTRIES, INC.

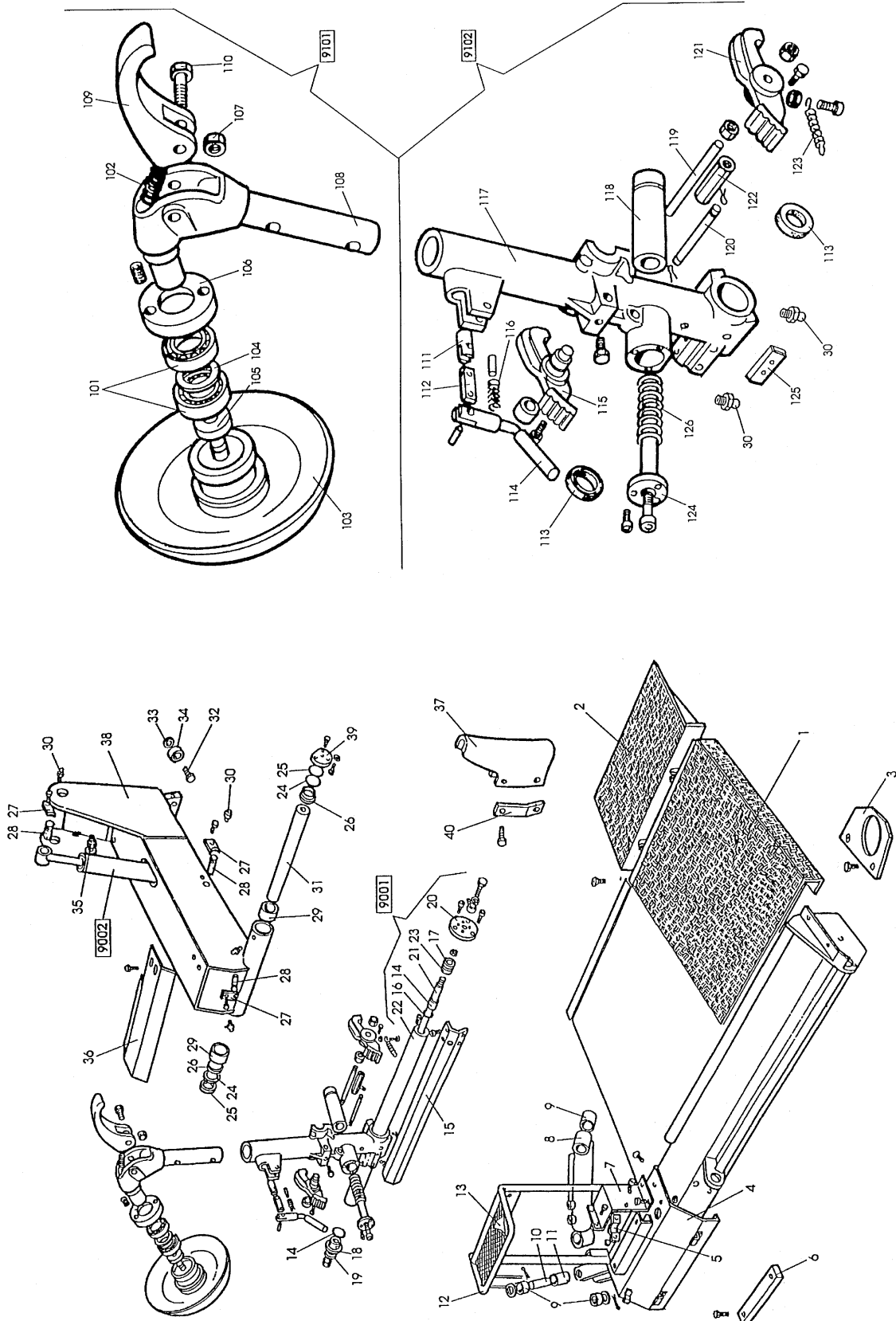
P.O. Box 3002, 1601 J. P. Hennessy Drive, LaVergne, TN USA 37086 615/641-7533 800/688-6359

HENNESSY INDUSTRIES INC. Manufacturer of AMMCO®, COATS® and BADA® Automotive Service Equipment and Tools.

Table of Contents

Arm with Jaw4, 5
Frame Assembly4, 5
Hose & Hydraulic Systems6, 7
Jaw Assembly8, 9
Arm Assembly8, 9
Pedal Assembly10, 11
Accessories & Options10, 11
Electrical Diagram12, 13

FRAME ASSEMBLY

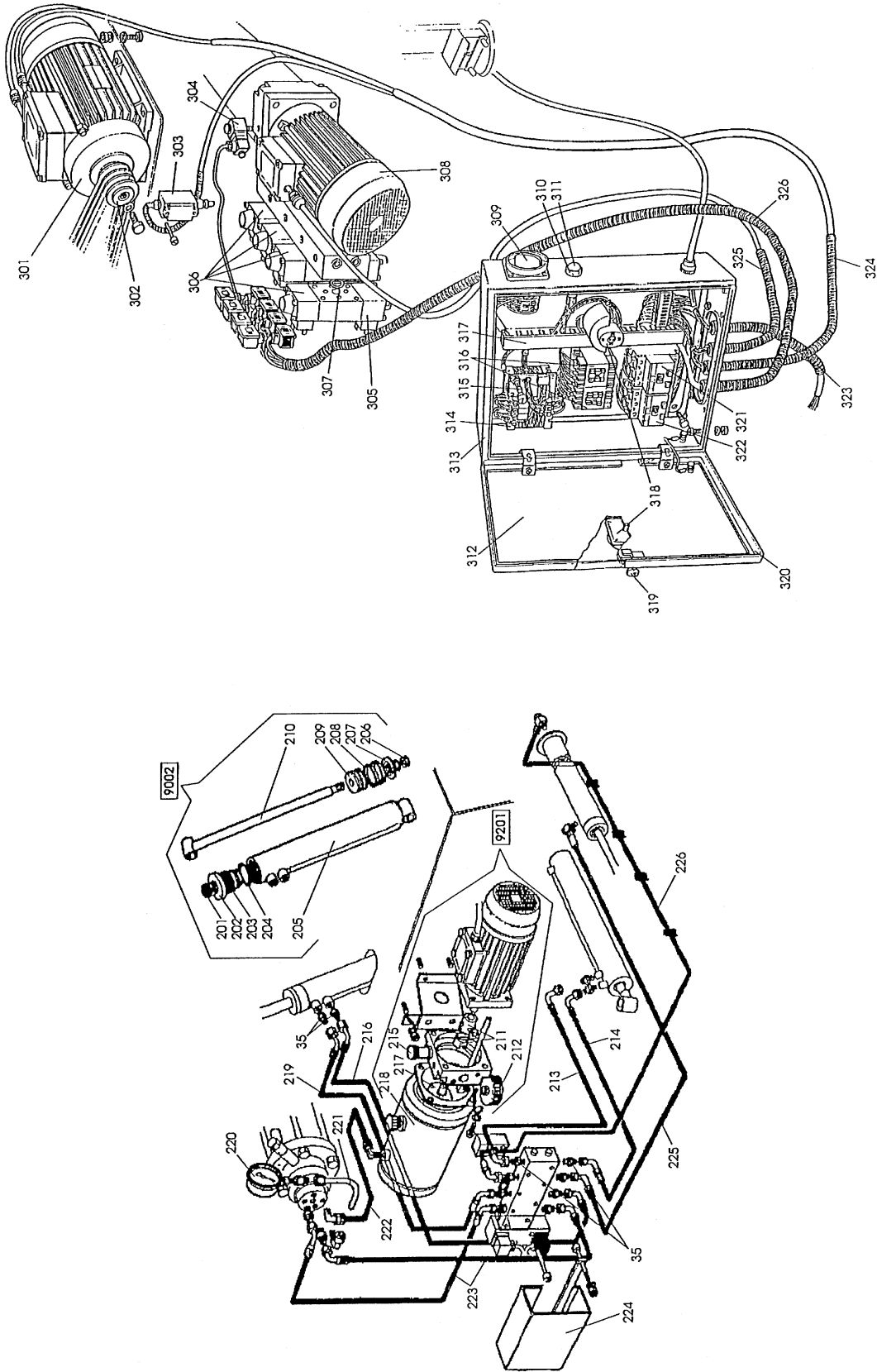


When ordering parts always give the following information:
 (1) Part Number (2) Description (3) Serial Number of Your Machine

ITEM	PART NO.	QTY.	DESCRIPTION
1	237497	1	Platform
2	237494	1	Ramp
3	329660	1	Metal Sheet
4	235458	1	Metal Sheet
5	338372	1	Strap
6	337489	1	Drawn
7	334422	1	Pin
8	234451	1	Cylinder
9	317421	2	Pipe
10	317425	1	Gudgeon
11	434466	1	Bushing
12	235457	1	Pipe
13	334842	1	Spacer
9001	248588	1	Cylinder
14	321787	2	Spacer
16	416444	1	Seal
17	321786	1	Piston
20	348586	1	Flange
21	336116	1	Pin
22	348585	1	Pipe
23	421832	1	Seal
15	247794	1	Metal Section
18	348587	1	Flange
19	422702	1	Seal
24	319510	2	Washer
25	417822	2	Ring
26	417823	2	Ring
27	321834	3	Retainer
28	334272	3	Fulcrum
29	434310	2	Brass
30	429406	2	Lubricator
31	322973	1	Pin
32	341909	1	Pin
33	341998	1	Washer
34	241999	1	Wheel
35	417627	1	Adapter
36	343650	1	Shield
37	346346	1	Shield
38	236913	1	Trolley
39	322972	1	Flange
40	346347	1	Shield
9002	217433	1	Cylinder

ITEM	PART NO.	QTY.	DESCRIPTION
9101	236486	1	Tool
101	601831	2	Bearing
102	421596	1	Spring
103	236453	1	Disk
104	337004	1	Spacer
105	337003	1	Washer
106	337002	1	Nut
107	601194	1	Nut
108	236485	1	Support
109	237503	1	Tool
110	336480	1	Fulcrum
9102	248590	1	Box
30	429406	2	Lubricator
111	336467	1	Lever
112	336469	1	Trace
113	447828	2	Seal
114	336468	1	Handle
115	321798	1	Crick
116	436490	1	Spring
117	348589	1	Box
118	236462	1	Spring Sheath
119	338295	1	Pin
120	338293	1	Hook
121	337037	1	Crick
122	338294	1	Pin
123	421828	1	Spring
124	236470	1	Pipe
125	344893	1	Slide
126	437519	1	Spring

HOSE AND HYDRAULIC SYSTEM ASSEMBLIES



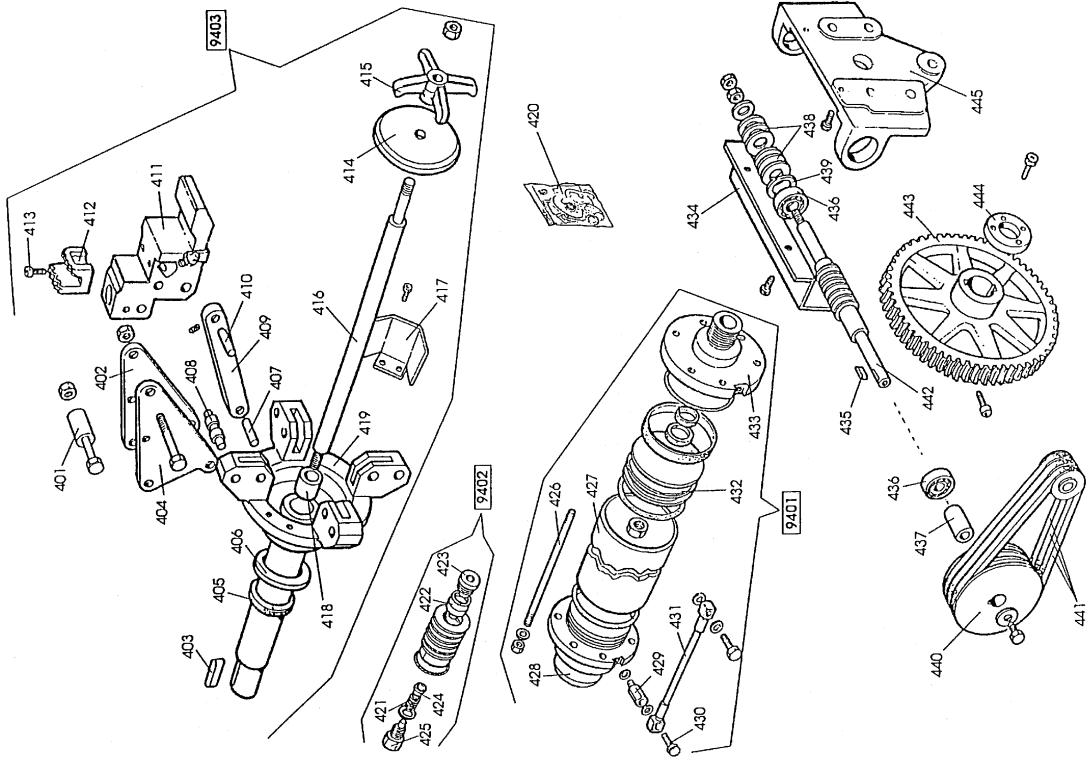
When ordering parts always give the following information:
 (1) Part Number (2) Description (3) Serial Number of Your Machine

ITEM	PART NO.	QTY.	DESCRIPTION
9002	217433	1	Cylinder
201	420179	1	Shield
202	418241	1	Seal
203	422612	1	Nut
204	418239	1	Seal
205	418237	1	Body
206	422621	1	Nut
207	420180	1	Ring
208	418238	1	Seal
209	430152	1	Piston
210	418236	1	Stem

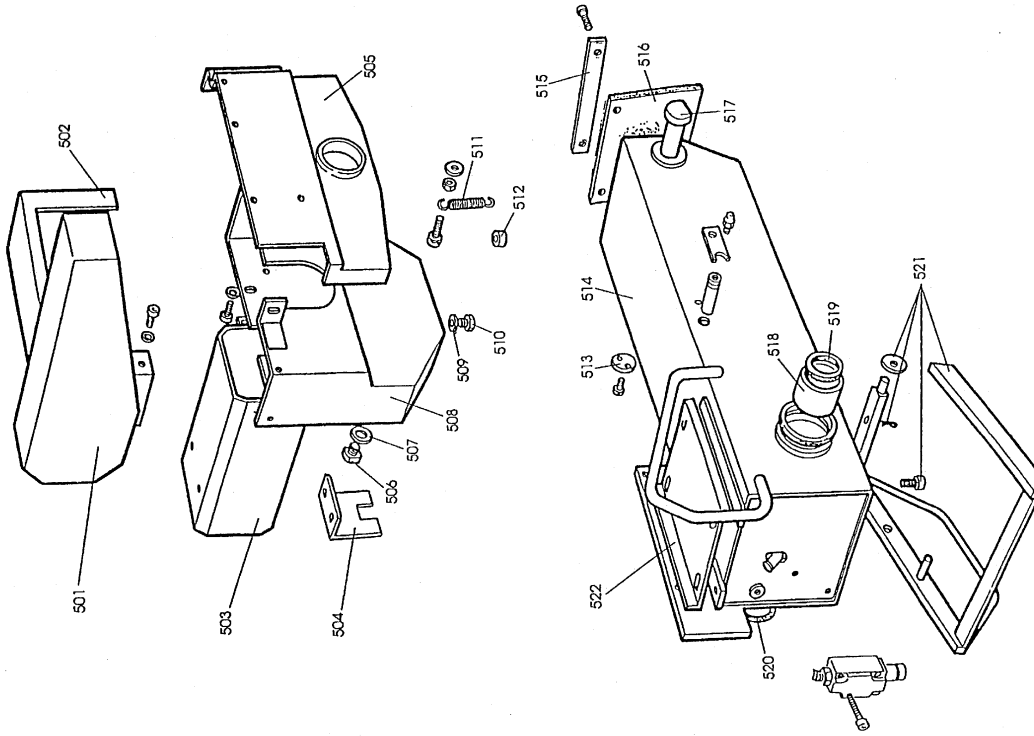
ITEM	PART NO.	QTY.	DESCRIPTION
9201	234259	1	Power Pack 220/380V 3ph 60Hz
211	424612	2	Coupling
212	424557	1	Filter
215	439390	1	Valve
217	435375	1	Pump 60Hz KIPS9,2
218	435365	1	Tank

ITEM	PART NO.	QTY.	DESCRIPTION
301	424020	1	Motor 220V 3ph 60Hz
302	318053	1	Pulley 60Hz
303	422041	1	Switch
304	235497	1	Valve
305	449088	1	Coil
306	442303	4	Electromagnet
307	424620	1	Ring
308	430651	1	Motor 220/380V 3ph 60Hz
309	436617	1	Commutator
310	422040	1	Pilot Lamp
311	415012	1	Lamp
312	236634	1	Lid
313	449792	1	Case
314	446502	1	Transformer
315	429692	1	Fuse
316	424701	2	Remote Switch
317	437540	1	Vibration Damp
318	435368	1	Switch
319	427755	1	Wrench
320	436641	1	Seal
321	491975	1	O.Load Cutout
322	491895	1	O.Load Cutout
323	236602	1	Cable
324	236600	1	Cable
325	236599	1	Cable
326	236601	1	Cable

JAW ASSEMBLY



ARM ASSEMBLY

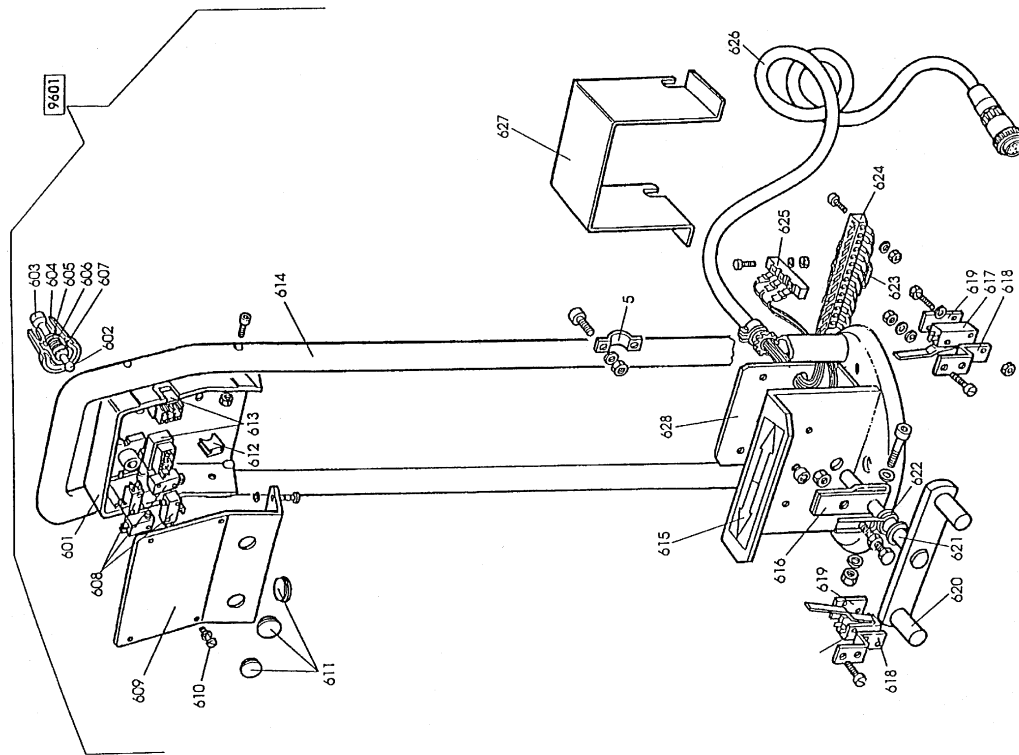


When ordering parts always give the following information:
 (1) Part Number (2) Description (3) Serial Number of Your Machine

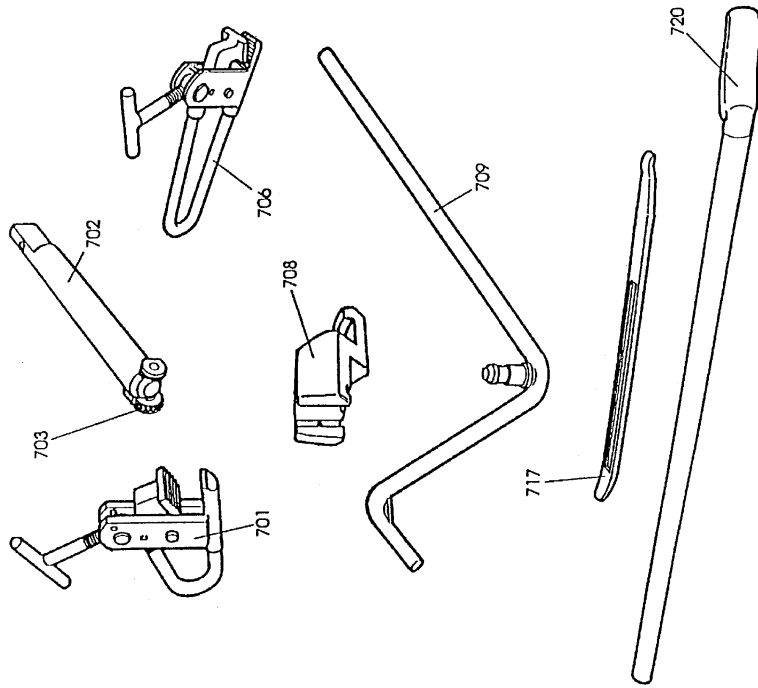
ITEM	PART NO.	QTY.	DESCRIPTION
9403	234155	1	Turntable
401	334160	1	Spacer
402	334156	1	Slab
403	601162	1	Tang
404	334157	1	Slab
405	425004	1	Washer
406	321558	1	Ring
407	321564	1	Gudgeon
408	334170	1	Roller
409	334163	1	Trace
410	334164	1	Gudgeon
411	334201	1	Support
412	421556	1	Jaw
413	601191	1	Screw
414	336515	1	Disk
415	321517	1	Cross
416	334146	1	Stem
417	341289	1	Casing
418	434166	1	Brass
419	234212	1	Spindle
9402	234477	1	Distrib.+gauge
9402	237345	1	Distributor
421	437487	1	Spring
422	324209	1	Piston
423	324210	1	Plug
424	437486	1	Guide
425	437642	1	Plug
9401	234134	1	Cylinder
426	334204	1	Stay Rod
427	338710	1	Cylinder
428	341542	1	Flange
429	335283	1	Extension Cord
430	335284	1	Screw
431	434426	1	Pipe
432	334143	1	Piston
433	341545	1	Flange

ITEM	PART NO.	QTY.	DESCRIPTION
420	237518	1	Seals Kit
434	323590	1	Shield
435	600716	1	Tang
436	601034	2	Bearing
437	317338	1	Spacer
438	601035	2	Bearing
439	317281	1	Washer
440	317274	1	Pulley
441	417447	3	Belt
442	317275	1	Screw
443	321570	1	Wheel
444	321586	1	Flange
445	349387	1	Support
501	223113	1	Casing
502	223589	1	Casing
503	234149	1	Casing
504	334152	1	Retainer
505	321571	1	Cap
506	447643	1	Status Light
507	447644	1	Nut
508	228314	1	Oil Sump
509	417816	1	Washer
510	319251	1	Plug
511	417834	1	Spring
512	305022	1	Spacer
513	341681	1	Washer
514	250394	1	Arm
515	346349	1	Support
516	346348	1	Shield
517	346390	1	Pin
518	450854	1	Brass
519	421572	1	Seal
520	421574	1	Seal
521	220127	1	Pedal
522	317321	1	Flange

PEDAL ASSEMBLY



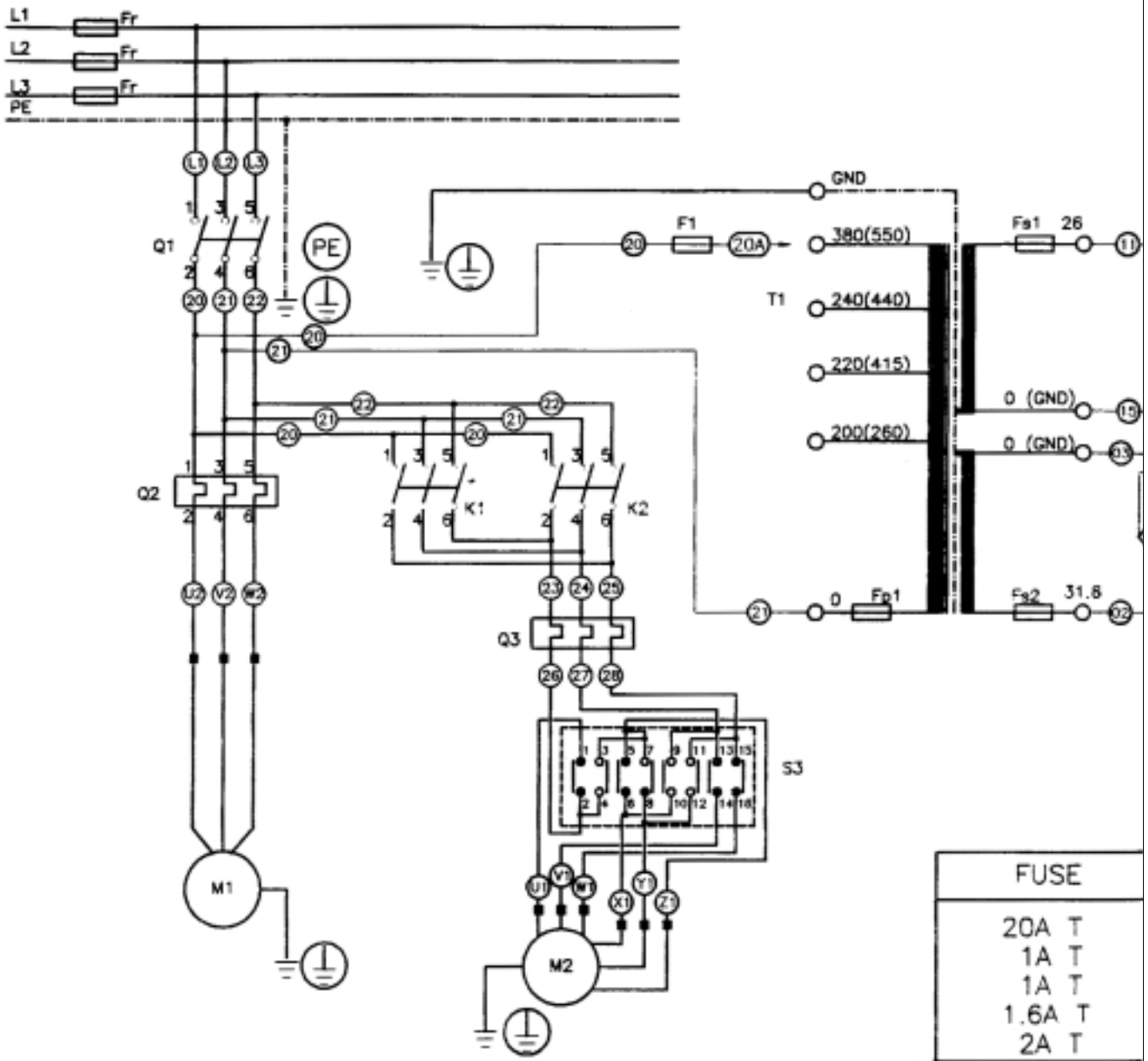
ACCESSORIES AND OPTIONS



When ordering parts always give the following information:
 (1) Part Number (2) Description (3) Serial Number of Your Machine

ITEM	PART NO.	DESCRIPTION	QTY.	DESCRIPTION	ITEM	PART NO.	DESCRIPTION	QTY.	DESCRIPTION
9601	244905	1	Manipulator		701	219244	1	Pliers	
5	338372	1	Strap		702	234230	1	Stem	
601	241703	1	Support		703	418785	1	Retainer	
602	339000	1	Lever		706	224201	1	Pliers	
603	338999	1	Knob		708	237803	1	Jaw	
604	435301	1	Shield		709	217617	1	Lever	
605	339001	1	Contrast		717	317620	1	Lever	
606	439697	1	Spring		720	236906	1	Lever	
607	339002	1	Guide						
608	439696	3	Microswitch						
609	344847	1	Lid						
610	441701	1	Screw						
611	435957	3	Plug						
612	441518	1	Shield						
613	439569	2	Switch						
614	244849	1	Control Pedal						
615	421502	1	Data Plate						
616	317491	1	Lever						
617	407012	1	Microswitch						
618	317476	2	Bracket						
619	311620	2	Plate						
620	217479	1	Pedal						
621	325050	1	Spacer						
622	401270	1	Spring						
623	414875	1	Diode						
624	418032	1	Terminal Board						
625	424791	1	Terminal Board						
626	247411	1	Cable						
627	344845	1	Casing						
628	344846	1	Support						

ELECTRICAL DIAGRAM



FUSE	
20A	T
1A	T
1A	T
1.6A	T
2A	T

ELECTRICAL DIAGRAM (Cont.)

