

### Hybrid Leverless Assembly Instructions



Always **DISCONNECT THE ELECTRICAL POWER** before servicing equipment. This prevents electrical shock or accidental movement of the systems operated by the electrical power.



Always **DISCONNECT AIR SUPPLY** before servicing equipment. This prevents accidental movement of systems operated by compressed air which may result in personal injury. **BLEED THE AIR SYSTEM** by actuating all the valves.

1. Disconnect the electrical power and air supply from the machine; empty all residual air.
2. Lock the vertical shaft.
3. Remove the leverless bead lifter assembly from the vertical shaft by removing the screw and washer set at the bottom of the vertical shaft.
4. Carefully lay the leverless bead lifter assembly on the tire changer table, making sure not to damage the coil air hose.

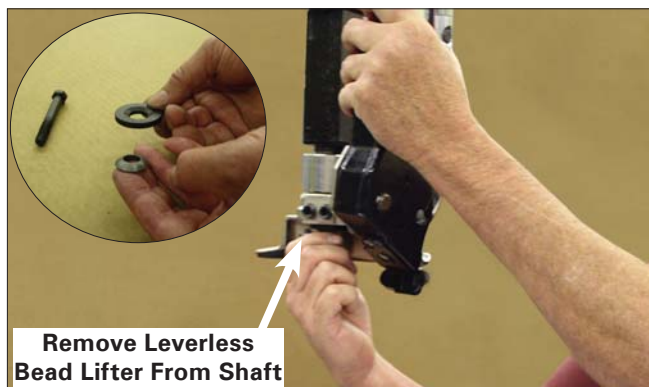


Figure 1 - Remove Leverless Bead Lifter From Shaft

5. Remove the retaining ring from the tool pin that is on the Duckhead® mount/demount tool side. **DO NOT REMOVE THE TOOL PIN FROM THE TOOL HOLDER!**

6. Remove the four screws holding the Duckhead mount/demount tool to the leverless tool holder.

7. Using the same four screws, attach the hybrid Duckhead mount/demount tool to the tool holder.

8. Reattach the retaining ring to the tool pin.

9. Assemble the washer set on the screw, small washer first with mating bevels together. Attach leverless bead lifter assembly to the vertical shaft; tighten screw to 20-26 ft. lbs.

**Note:** When using a hybrid mount/demount tool, push the tail into the wheel before lifting the tire with the bead lifting tool.

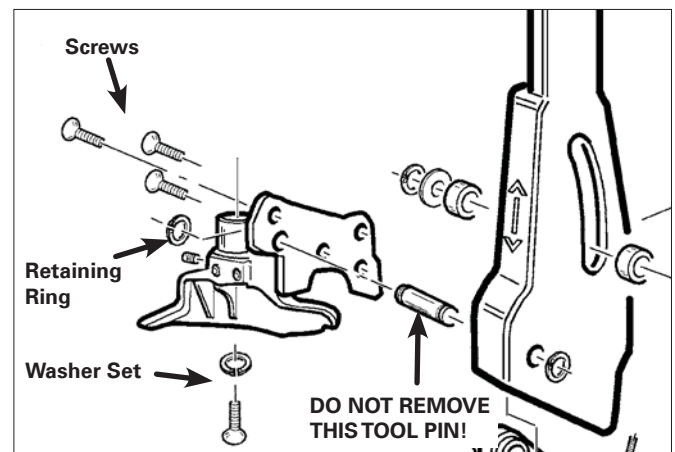


Figure 2 - Parts Assembly View