

# COATS®

## 9024

### Rim Clamp® Tire Changer

*For servicing single piece automotive and most light truck tire/wheel assemblies*



### ***Parts Identification***

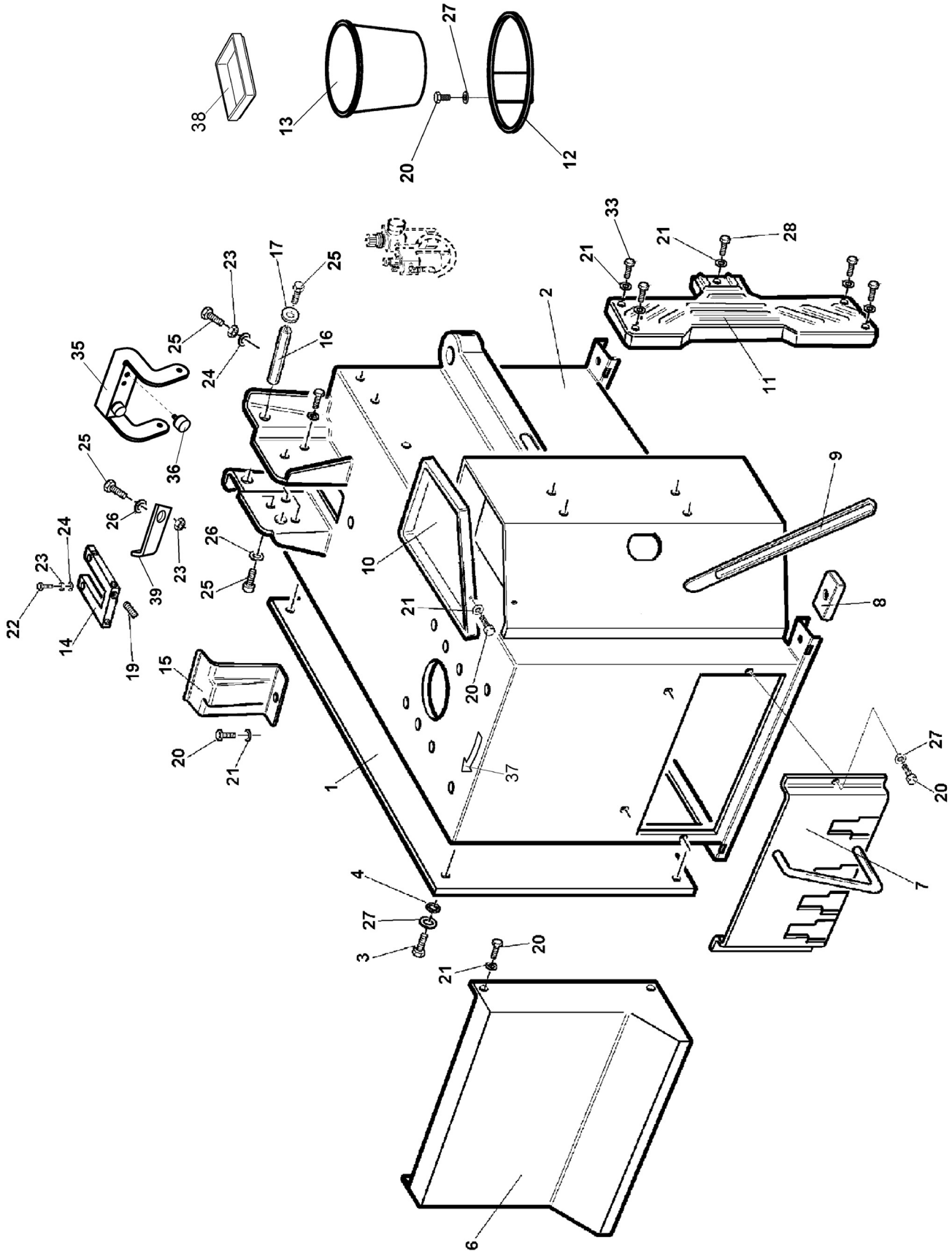
READ these instructions before placing unit in service KEEP these and other materials delivered with the unit in a binder near the machine for ease of reference by supervisors and operators.

***HENNESSY INDUSTRIES, INC.***

1601 J. P. Hennessy Drive, LaVergne, TN USA 37086-3565 615/641-7533 800/688-6359 www.amccoats.com  
HENNESSY INDUSTRIES INC. Manufacturer of AMMCO®, COATS® and BADA® Automotive Service Equipment and Tools.

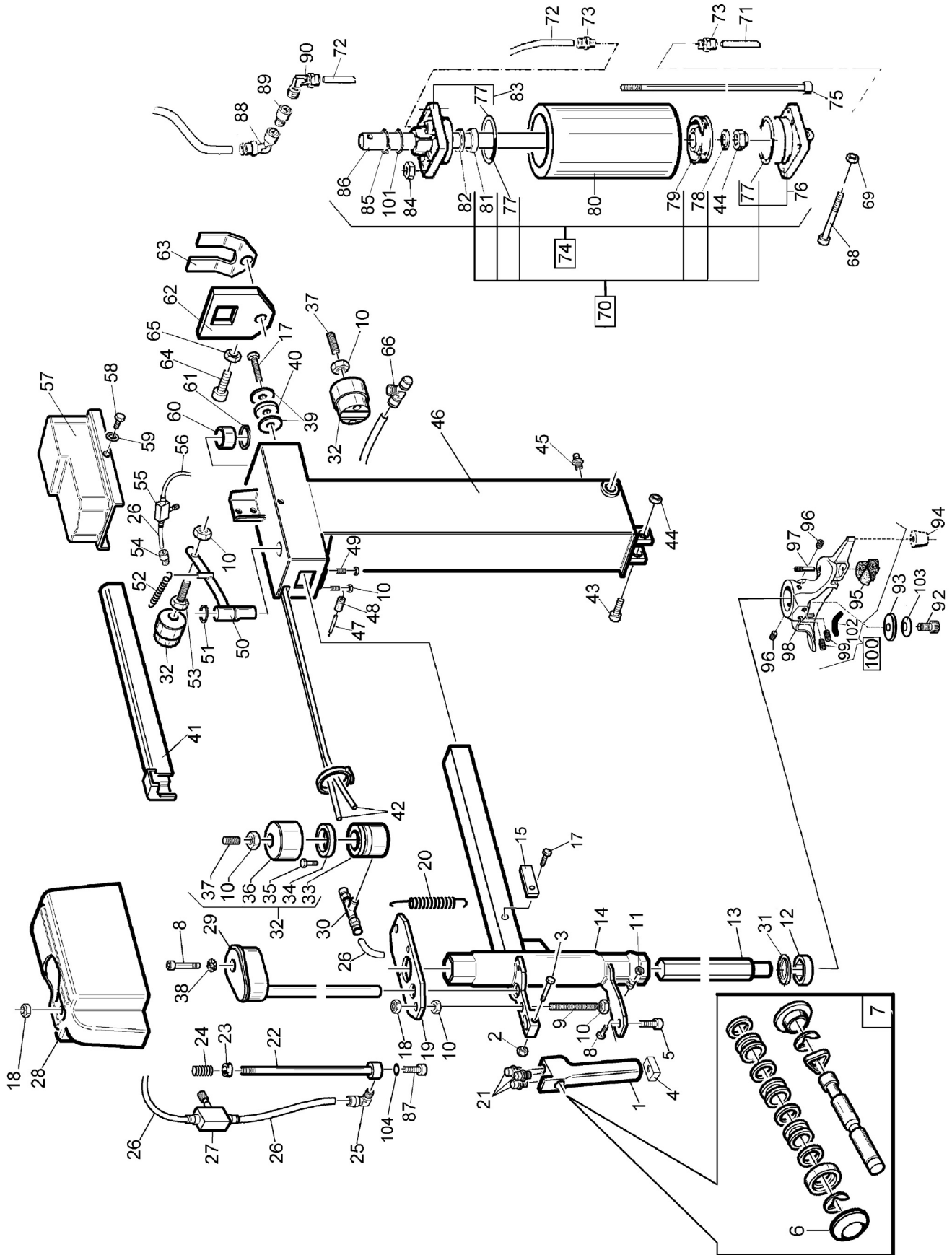
Manual Part No.: 8184378 13  
Revision: 11/06

# Chassis



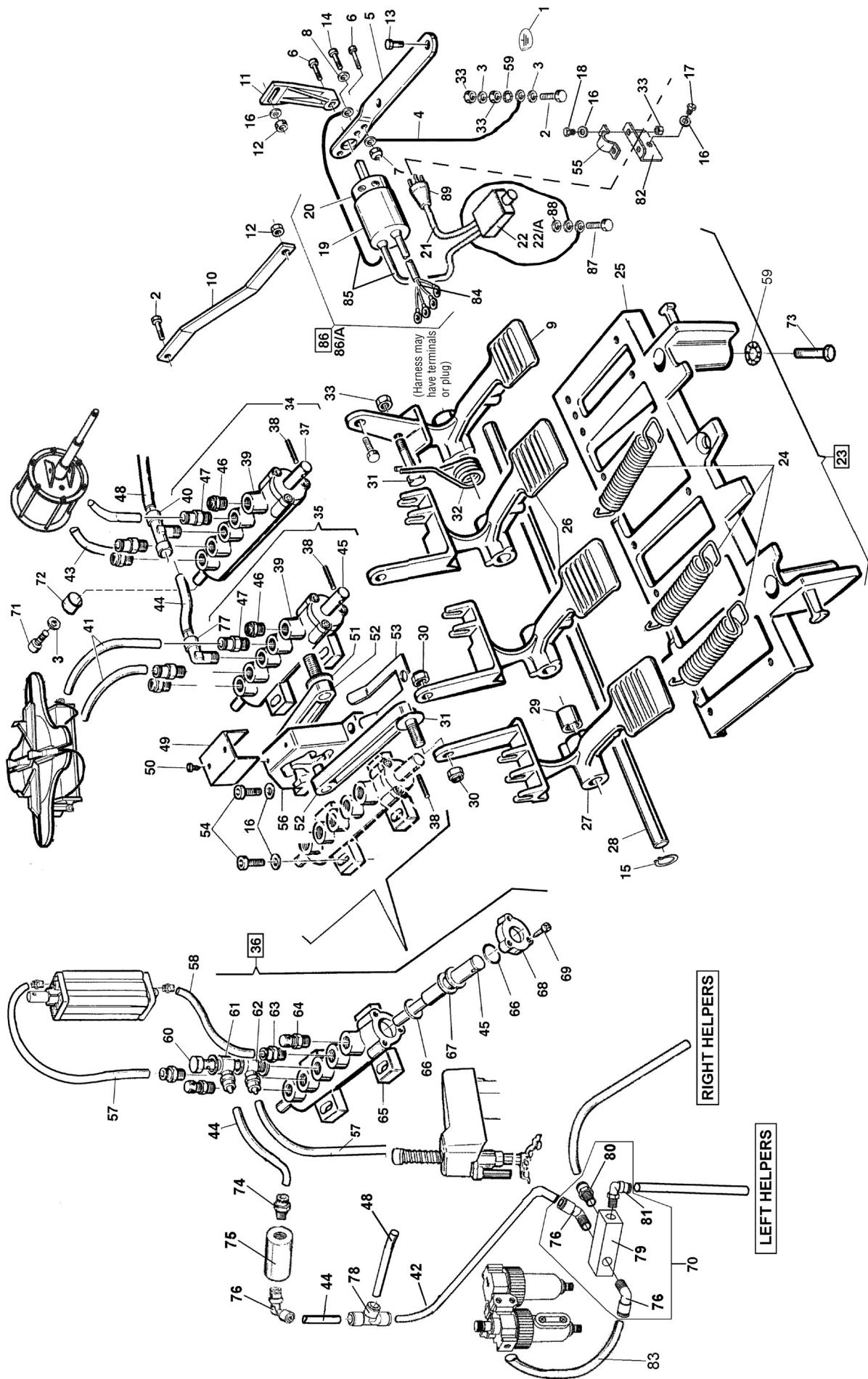
Ref	Part No.	Description
1	82112268	Side Cover
2	87911982	Chassis Body
3	84398708	Screw 6x16
4	84399288	Washer Toothed 6,4x11x0,7
6	86612729	Pedal Cover
7	86612453	Pedal Support
8	83002099	Plastic Foot
9	8181354	Bead Lifting Tool
10	83011972	Cover
11	83002102	Wheel Support
12	83000069	Spring
13	8183785	Mounting Paste
14	83012312	Spacer
15	83012450	Cover Protection
16	83000206	Trunnion
17	83000495	Washer D. 10x36x5
19	84399957	Screw 6x8
20	84398723	Screw 6x12 - 8.8
21	84398848	Washer 6 (6,6x18x1,5)
22	84399880	Screw 10x40
23	84399967	Nut M10
24	84398662	Washer Grower D.10
25	84399228	Screw 10x25
26	84399378	Washer D.10 (10,5x21x2)
27	84399998	Washer 6 (6,4x12x1,6)
28	84399584	Screw 6x18
29	8184270	9024 E Decal Machine
30	8183593	Foot Pedal Decal
31	8314012	CSA Decal
32	8140963	Caution Decal
33	84399999	Screw 6x25
35	86613334	Saddle Bracket
36	84296213	Bumper
39	83008991	Plate, Fxng

# Tower Assembly



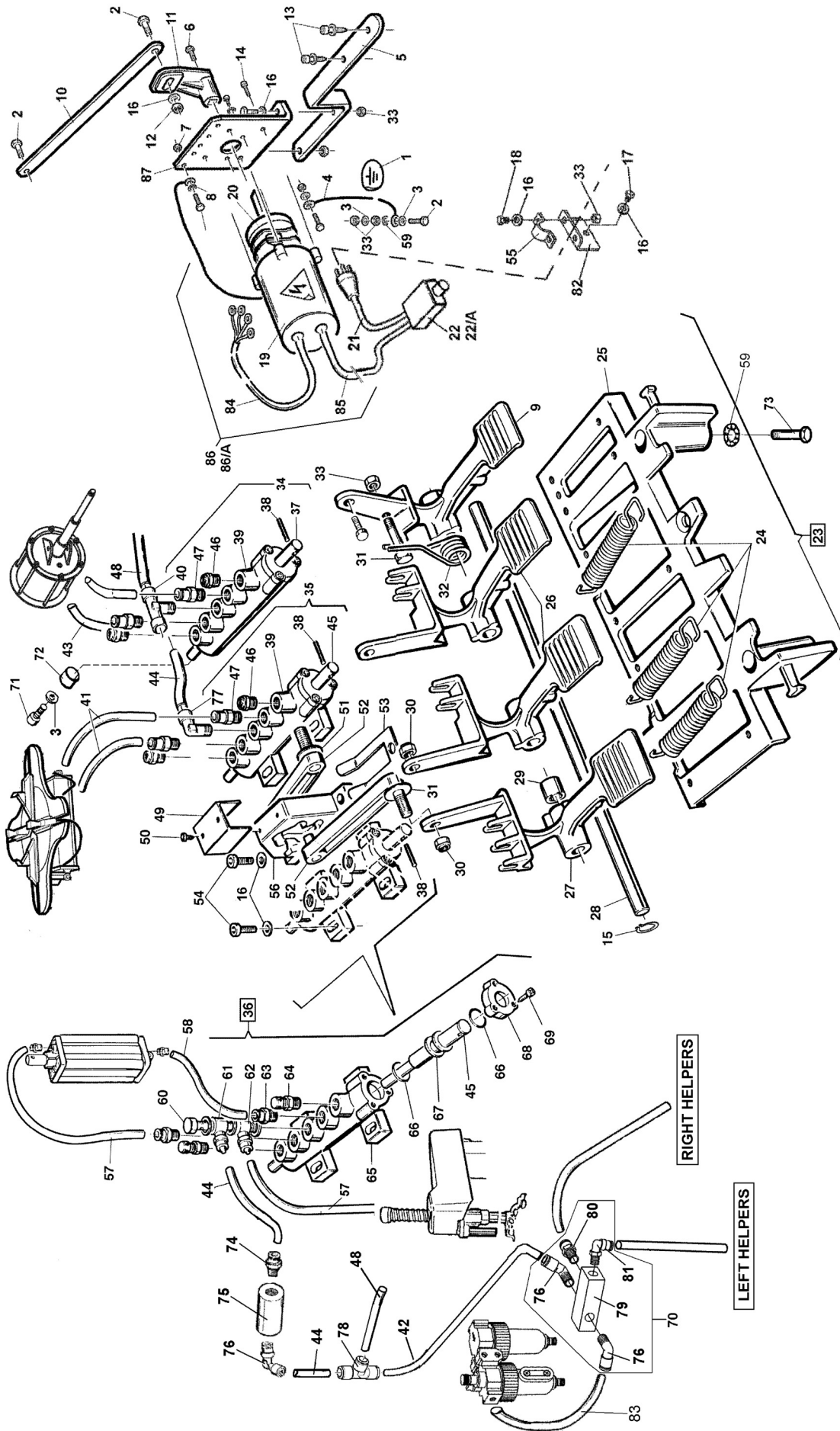
Ref	Part No.	Description	Ref	Part No.	Descrip.	Ref	Part No.	Description
1	82012461	Handle Assembly	40	83000181	Washer	80	83008084	Cylinder Liner L=135
2	84399895	Nut Self-Locking M4	41	83008915	Pipe Guide	81	84298823	Nylon Guide
3	84399896	Screw 4x35	42	83013424	Rilsan Hose 4x2.7 L=2620	82	84299168	O-ring 20,29x2,62
4	83013355	Handle Insert	43	83000599	Pin M12 L=50	83	82015177	Flange
5	84399892	Screw M6x20 - 8.8	44	84399865	Nut Self-Locking M12	84	84397678	Nut Flanged M8
6	83012721	Cap	45	84399207	Lubricator M6	85	83199599	Seeger Ring D.30
7	82008335	Arm Control Spares	46	87911983	Vertical Arm	86	83002624	Cylinder Rod L=307
8	84399133	Screw 8x40	47	83008171	Roller	87	84398897	Screw 5x20
9	83012459	Threaded Bar M10 L=120	48	84397661	Parallel Pin 12x80	88	84197210	Union 1/8"
10	84399967	Nut M10	49	84398762	Screw 10x25	89	84197209	Coupling 2543 1/8" F
11	84399900	Self-Locking Nut M8	50	82112762	Locking Lever	90	84199098	Quick Union 1/8" 6-4
12	83002601	Mount. Head Shock Absorber	51	84399979	Seeger Ring D.30	91	8182373	Warning Decal
13	83008889	Hexagonal Arm D.41 L=856	52	83000141	Spring	92	84399953	Screw M10x16 - 8.8
14	86612521	Arm Horizontal	53	84398900	Screw Brass 10x25	93	84395804	Washer D.14,2x35x5
15	83007935	Shock Absorber	54	84197742	Quick Union 1/8"	94	83000215	Peak Roll
17	84399827	Screw 8x20	55	84197703	Flow Regulator	95	89209611	Plastic Insert - Pkg. 6
18	84399971	Nut Self-Locking M10	56	83008355	Rilsan Hose 4x2 L=300	96	84395530	Set Screw M12x12
19	83006106	Arm Locking Plate	57	83011973	Cover	97	83009018	Special Pin D.5 M6 L=26
20	83002273	Spring	58	84398723	Screw 6x12 - 8.8	98	83015133	Short Mounting Tool
21	84197743	Union	59	84399998	Washer 6 (6,4x12x1,6)	99	84398849	Screw M10x16
22	82008969	Inner Pipe	60	83000736	Bushing 16x25x15,25	100	82014250	Mounting Tool
23	84298812	Sealing Ring 8,4x16x6,2	61	84398686	Seeger Ring D.16	101	84398146	Steel Shim 24x30x1
24	83002629	Spring 13,5x28 F 2,3	62	82108115	Arm Locking Plate	102	830136502	Lower Insert - Pkg. 6, 2
25	84197718	Union	63	83007839	Arm Locking Spring	103	84395805	Washer 10,2x2x21x4
26	83007990	Rilsan Hose 4x2 L=220	64	84397527	Screw 8x30 - 10.9	104	84399292	Washer 5 (5,3x10x1)
27	84197703	Flow Regulator	65	84399976	Nut M8			
28	83012357	Arm Frame	66	84197740	Quick Union 1/8"			
29	82008968	Outer Pipe	67	84398284	Screw 10x30			
30	84197740	Quick Union 1/8"	68	84399539	Pin			
31	84397031	Steel Shim 35x45x0,5	69	84399865	Self-locking Nut M12			
32	82099665	Locking Cylinder	70	82004804	Cylinder Seal Kit			
33	84299523	Piston D.60	71	83000217	Rilsan Hose 6x4 L=840			
34	84299522	Sealing Ring	72	83000218	Rilsan Hose 6x4 L=1200			
35	84399135	Screw 6x35	73	84198993	Quick Union 1/8" - 6			
36	84299524	Cylinder Liner D.60	74	82002831	Tilting Cylinder			
37	84398284	Screw 10x30	75	83008085	Special Screw M8x160			
38	84399122	Toothed Washer 8,4x15x0,8	76	82015178	Flange			
39	84399947	Washer 8 (9x32x4)	77	84298822	O-Ring D.68,26x3,53			
			78	84398753	Washer D.12,5x30x3			
			79	84198856	Piston D.75			

# Foot Pedal Assembly



Ref	Part No.	Description	Ref	Part No.	Description
1	83005604	Sticker	46	84199610	Silencer 1/8"
2	84399892	Screw M6x20 - 8.8	47	84198954	Quick Union 6510 1/8" - 8
3	84399848	Washer 6 (6.6x18x1.5)	48	83000145	Hose Rilsan D.8x6 L=250
4	82006040	Ground Cable	49	84299910	Connecting Rod Guide
5	83002445	Support	50	84399891	Screw Self-Tapping 2,9x6,5
6	84399905	Screw M4x12 8.8	51	84399894	Washer Belleville 8,2x18x1
7	84399996	Nut M4 6s	52	84299912	Connecting Rod
8	84399045	Toothed Washer 3,2x12x0,5	53	84299911	Spring Forked Leaf
9	83002157	Reverser Control Pedal	54	84398274	Screw Self Tapping 5,5x26
10	83002447	Connecting Rod	55	83009062	Cable-Holder U-bolt
11	83000175	Reverser Lever	56	84299913	Double Cam
12	84399893	Self Locking Nut M6	57	83000218	Hose Rilsan 6x4 L=1200
13	84398273	Self Tapping Screw 5,5x19	58	83000217	Hose Rilsan 6x4 L=840
14	84399044	Screw 3x12 12,9	59	84399122	Washer Toothed 8,4x15x0,8
15	84399864	Seeger Ring D.12	60	84199928	Union 1/8"
16	84399998	Washer 6 (6,4x12x1,6)	61	84199842	Union 1/8" - 8-6
17	8113102	Strain Relief, Heyco SR9P-2	62	84199927	Union 1/8" - 6
18	84398708	Screw M6x12	63	84198993	Quick Union 1/8" - 6
19	84596016	Cover	64	84199843	Adjuster 1/8" Silencer Outlet
20	84598154	Reverser Switch 1 Ph, 32 Amp	65	83001583	Valve Distribution
21	850002841	Power Cable Assembly	66	84299000	O-Ring 9,8x3,85
22	8184935	Power Cable, 50 hz	67	83001584	Spacer For Valve 82002444
23	8184376	Circuit Breaker - 25 Amp	68	83001585	Flange For Valve 82002444
24	83013333	Pedal Unit	69	84398999	Screw Self-Tapping 3,5x13
25	83002161	Pedal Return Spring	70	82008893	Pneumatic Divider Group
26	83002159	Pedal Box Base	71	84399229	Screw M6x10
27	83002160	Pedal	72	84197629	Washer Nylon 1/8"
28	83003095	Tilting Control Pedal	73	84399946	Screw M8x16 - 8.8
29	83007953	Pedal Alignment Pin	74	84198853	Quick Union 1/4" - 8
30	84399900	Bushing D.18x12,5x21	75	84198853	Unidirectional Valve 1/4"
31	84397649	Self Locking Nut M8	76	84198883	Quick Union 1/4" - 8
32	83000142	Screw 6x50 8.8	77	84198990	Quick Union 1/8" - 8
33	84399889	Spring Control Pedal	78	84198594	Quick Union 1/8" - 8
34	82006297	Nut M6	79	83000670	Pneumatic Divider 1/4" - 1/8"
35	82002529	Valve Bead Breaking	80	84198298	Quick Union 1/4" - 6
36	82002531	Valve Turntable	81	84199098	Quick Union 1/8" - 6-4
37	83007598	Valve Tilting	82	83009063	U-bolt Support
38	84398783	Shaft Valve	83	83001382	Hose Rilsan D.8x6 L=850
39	82002444	Pin Spring D.4x24	84	82014195	Mot.-inv. Connecting Cable
40	84198778	Valve Assembly Without Pin	85	82014196	1ph Reverser Connecting Cable
41	83099335	Union 6410 1/8" - 8	86	82013434	1ph Reverser
42	83001342	Hose Rilsan D.8x6 L=750	87	8110560	Ground Screw - Green
43	83000144	Hose Rilsan D.8x6 L=1000	88	8301084	Nut
44	83002446	Hose Rilsan D.8x6 L=910	89	85000279	Plug 30A (only)
45	83002442	Hose Rilsan D.8x6 L=100			
		Pin Valve			

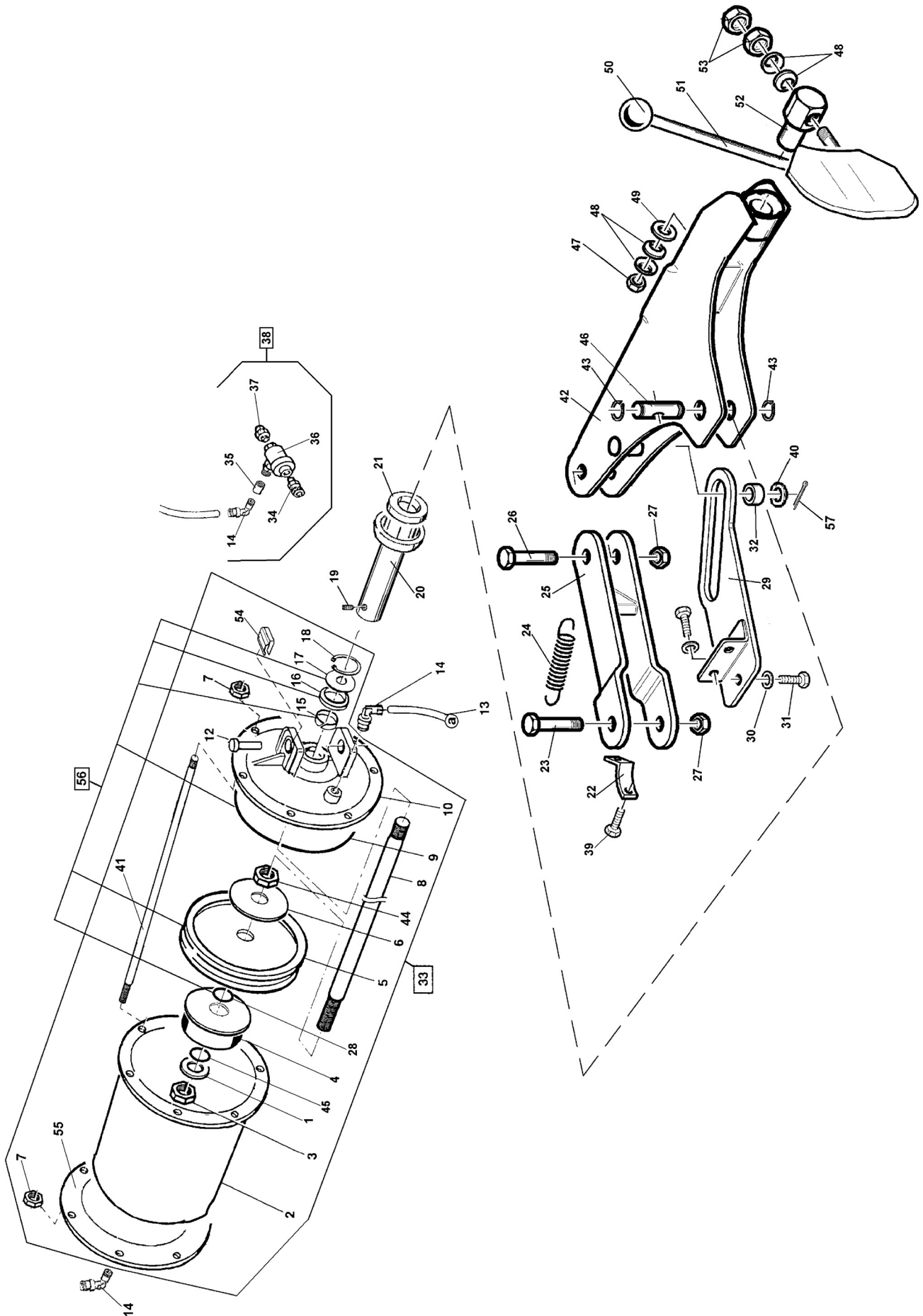
# Bead Loosener Shoe and Cylinder





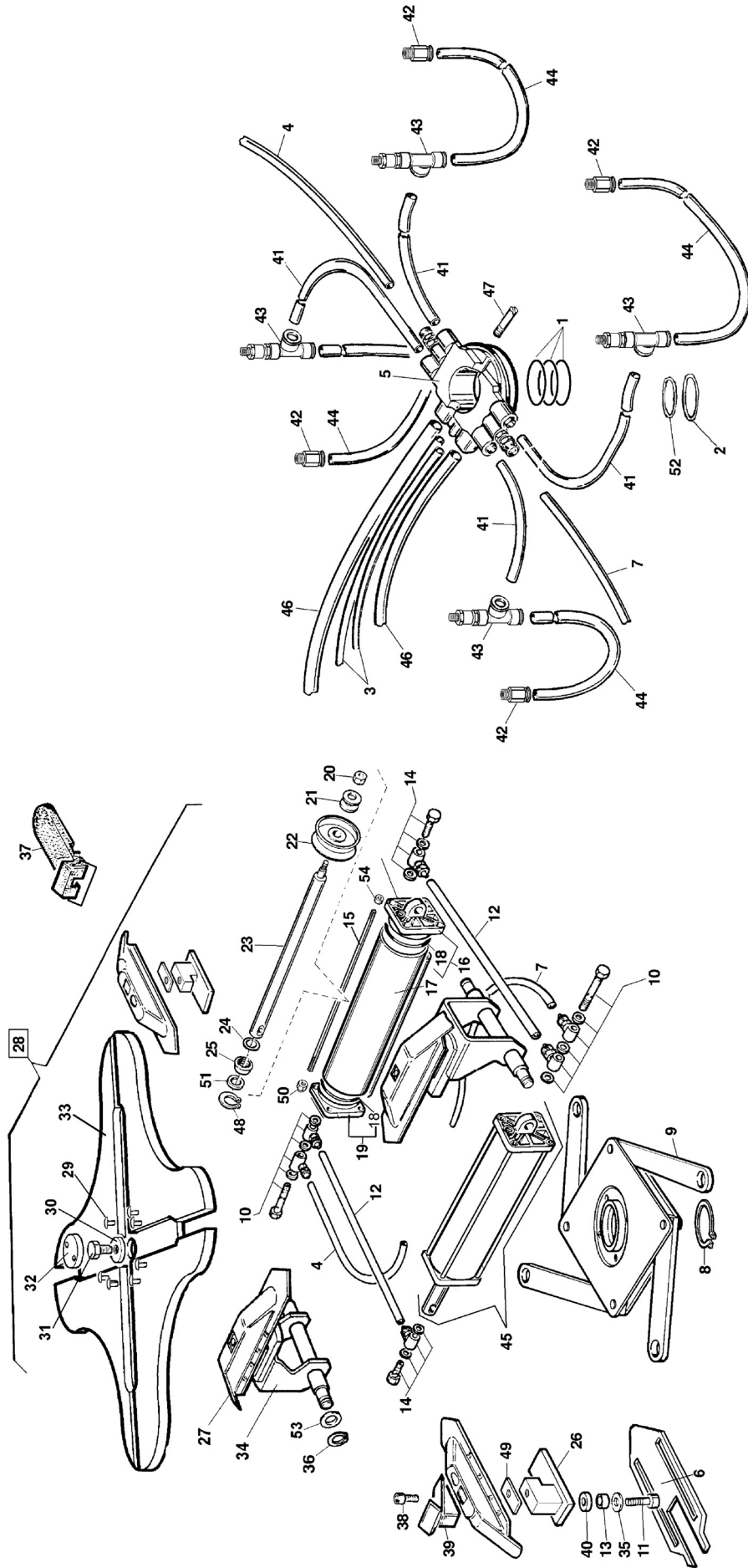
Ref	Part No.	Description	Ref	Part No.	Description
1	83005604	Sticker	46	84199610	Silencer 1/8"
2	84399892	Screw M6x20 - 8.8	47	84198954	Quick Union 6510 1/8" - 8
3	84399848	Washer 6 (6.6x18x1.5)	48	83000145	Hose Rilsan D.8x6 L=250
4	82006040	Ground Cable	49	84299910	Connecting Rod Guide
5	83002445	Support	50	84399891	Screw Self-Tapping 2,9x6,5
6	84399905	Screw M4x12 8.8	51	84399894	Washer Belleville 8,2x18x1
7	84399996	Nut M4 6s	52	84299912	Connecting Rod
8	84399045	Toothed Washer 3,2x12x0,5	53	84299911	Spring Forked Leaf
9	83002157	Reverser Control Pedal	54	84398274	Screw Self Tapping 5,5x26
10	83002447	Connecting Rod	55	83009062	Cable-Holder U-bolt
11	83000175	Reverser Lever	56	84299913	Double Cam
12	84399893	Self Locking Nut M6	57	83000218	Hose Rilsan 6x4 L=1200
13	84398273	Self Tapping Screw 5,5x19	58	83000217	Hose Rilsan 6x4 L=840
14	84399044	Screw 3x12 12,9	59	84399122	Washer Toothed 8,4x15x0,8
15	84399864	Seeger Ring D.12	60	84199928	Union 1/8"
16	84399998	Washer 6 (6,4x12x1,6)	61	84199842	Union 1/8" - 8-6
17	84398723	Screw M6x12	62	84199927	Union 1/8" - 6
18	84398708	Screw M6x12	63	84198993	Quick Union 1/8" - 6
19	84596016	Cover	64	84199843	Adjuster 1/8" Silencer Outlet
20	84598154	Reverser Switch 1 Ph, 32 Amp	65	83001583	Valve Distribution
21	8184450	Power Cable	66	84299000	O-Ring 9,8x3,85
22	8184935	Power Cable, 50 hz	67	83001584	Spacer For Valve 82002444
23	8184376	Circuit Breaker - 25 Amp	68	83001585	Flange For Valve 82002444
24	83013333	Pedal Unit	69	84398999	Screw Self-Tapping 3,5x13
25	83002161	Pedal Return Spring	70	82008893	Pneumatic Divider Group
26	83002159	Pedal Box Base	71	84399229	Screw M6x10
27	83002160	Pedal	72	84197629	Washer Nylon 1/8"
28	83003095	Tilting Control Pedal	73	84399946	Screw M8x16 - 8.8
29	83007953	Pedal Alignment Pin	74	84198853	Quick Union 1/4" - 8
30	84399900	Bushing D.18x12,5x21	75	84198853	Unidirectional Valve 1/4"
31	84397649	Self Locking Nut M8	76	84198883	Quick Union 1/4" - 8
32	83000142	Screw 6x50 8.8	77	84198990	Quick Union 1/8" - 8
33	84399889	Spring Control Pedal	78	84198594	Quick Union 1/8" - 8
34	82006297	Nut M6	79	83000670	Pneumatic Divider 1/4" - 1/8"
35	82002529	Valve Bead Breaking	80	84198298	Quick Union 1/4" - 6
36	82002531	Valve Turntable	81	84199098	Quick Union 1/8" - 6-4
37	83007598	Valve Tilting	82	83009063	U-bolt Support
38	84398783	Shaft Valve	83	83001382	Hose Rilsan D.8x6 L=850
39	82002444	Pin Spring D.4x24	84	82014195	Mot.-inv. Connecting Cable
40	84198778	Valve Assembly Without Pin	85	82014196	1ph Reverser Connecting Cable
41	83099335	Union 6410 1/8" - 8	86	82013434	1ph Reverser
42	83001342	Hose Rilsan D.8x6 L=750			
43	83000144	Hose Rilsan D.8x6 L-1000			
44	83002446	Hose Rilsan D.8x6 L=910			
45	83002442	Hose Rilsan D.8x6 L=100			
		Pin Valve			

# Bead Loosener Shoe and Cylinder



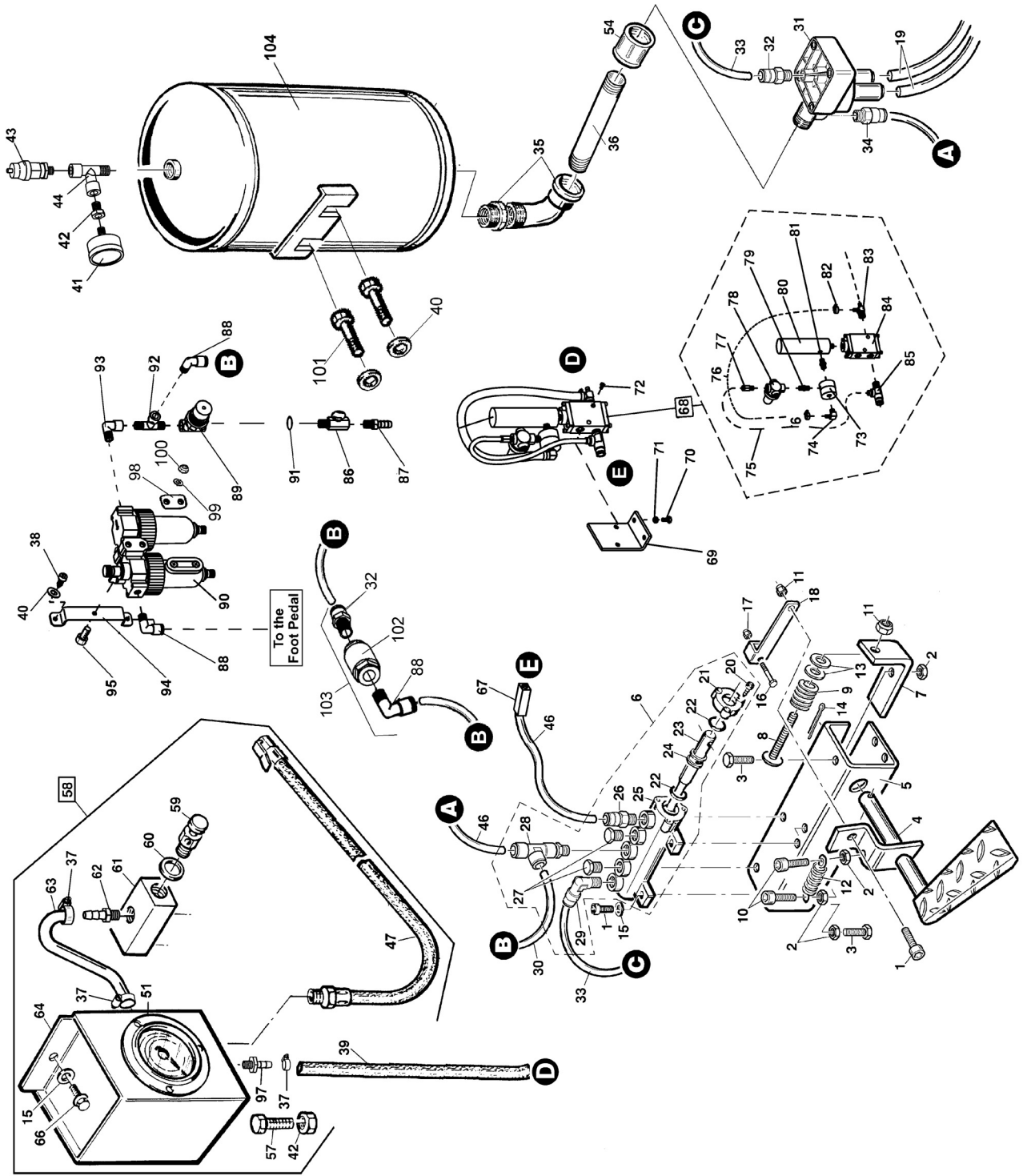
Ref	Part No.	Description	Ref	Part No.	Description
1	84398289	Washer 18 (19x34x3)	42	86611984	Arm Bead Breaking
2	83005053	Cylinder Liner	43	84398178	Seeger Ring D.40
3	84398725	Nut Self-Locking M18	44	84398144	Nut M18
4	83005809	Limit Stop	46	83008990	Pin Pivot D.40
5	82009091	Cylinder Seal Kit	47	84399949	Nut Self-Locking M14
6	83006496	Washer 18x90	48	84398899	Spring Belleville 14,3x34x1,5
7	84399892	Screw M6x20 - 8.8	49	84398751	Washer 14 (16x42x3)
8	83007852	Piston Rod D.20 L=525	50	84299952	Knob D.12
10	82112412	Flange	51	82112275	Plate Bead Breaking
13	83000889	Hose 8x6 L=1100	52	83010293	Trunnion L=96
14	84198578	Rotating Union 1/4" - 8-6	53	84396941	Nut M14
18	83199599	Seeger Ring D.30	54	83008811	Cylinder Back Flange
19	84399121	Screw 6x6	55	84397401	Flange Nut M 10
20	82112754	Support	56	83008812	Tie Rod M10 L=260
21	83002117	Shock Absorber D.20x63x12			
22	83012489	Spring Plate			
23	84397455	Screw 16x140			
24	83000114	Spring Arm			
25	82111986	Trunnion			
26	84396312	Screw 16x110			
27	84399963	Nut Self-Locking M16			
28	84297585	O-Ring D.15,47x3,53			
29	82111987	Guide			
30	84399378	Washer D.10 (10,5x21x2)			
31	84399966	Screw M10x20 - 8.8			
32	83001039	Roller			
33	82013417	Cylinder Bead Breaker			
34	84198954	Quick Union 6510 1/8" - 8			
35	84198894	Coupling 2543 1/4" F			
36	84199671	Valve Quick Relief 1/4"			
37	84399975	Seeger Ring D.20			
38	82008204	Valve Quick Relief			
39	84399946	Screw M8x16 - 8.8			

# Tabletop Assembly



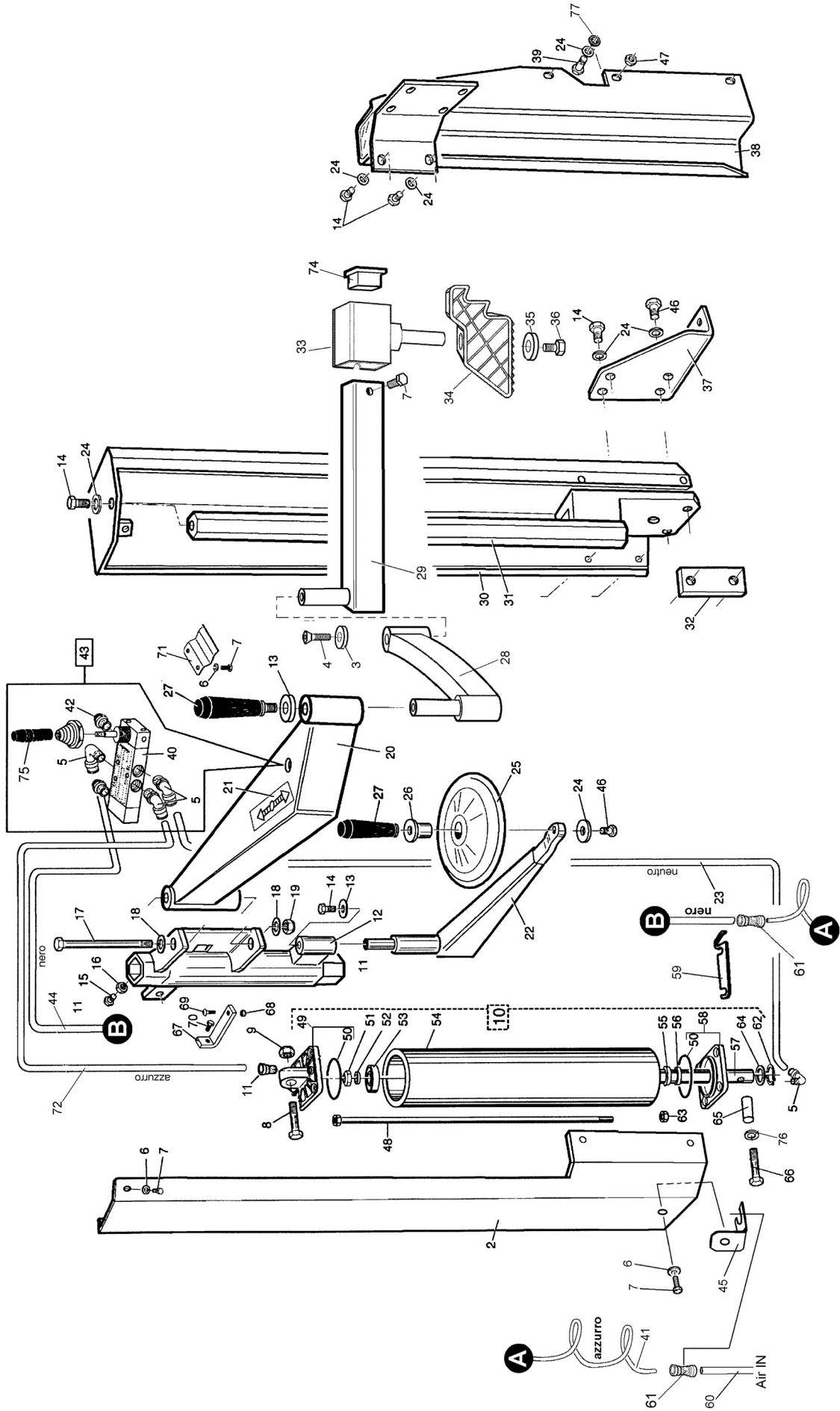
Ref	Part No.	Description	Ref	Part No.	Description
1	84298802	O-Ring 63,17x2,62	40	83006879	Spacer Turntable
2	83008646	Spacer O-Ring (D.55x1,5)	41	83006477	Hose 10x6,5 L=335
3	83099335	Hose Rilsan D.8x6 L=750	42	84198035	Brass Union Pc10-02
4	83002225	Hose Spiral Rilsan 8x6 L=320	43	84197207	Union Tee 1/8" 10-8
5	84298992	Rotating Union	44	83006478	Hose Polyurethan 10x6,5 L=310
6	83012224	Plate 24" Turntable	45	82008857	Cylinder 24" Turntable
7	83002226	Hose Spiral Rilsan 8x6 L=430	46	83002109	Hose Rilsan D.14x11 L=1070
8	84399932	Seeger Ring D.65	47	83001996	Screw
9	82012472	Flange 24" Turntable	48	83199599	Seeger Ring D.30
10	84198870	Double Union 1/8" 8-6	49	83006877	Slide Shim
11	84398838	Screw M12x1,25x45	50	84397678	Nut Flanged M8
12	83099338	Hose Rilsan D.8x6 L=170	51	84398146	Steel Shim 24x30x0,3
13	83006880	Spacer Connecting Rod	52	84297520	O-Ring 153 D.49,21x3,53
14	84198898	Union 1/8" 8-6	53	84398637	Washer D.12x21x2,5
15	83008860	Stud Bolt M8x1,25x437			
16	82015178	Flange			
17	83008858	Cylinder Liner L=402			
18	84298822	O-Ring D.68,26x3,53			
19	82015177	Front Flange			
20	84399865	Nut Self-Locking M12			
21	84398753	Washer D.12,5x30x3			
22	84198856	Piston D.75			
23	83008859	Cylinder Shaft D.20 L=458			
24	84298823	Guide In Nylon			
25	83199601	Scraper			
26	82107487	Slide Guide			
27	82107387	Gt Slide			
28	82012470	Turntable 24" Gt			
29	84398727	Retaining Pin D.5x18			
30	83009778	Washer D.16x47x13			
31	84399926	Screw M16x1,5x40 - 8.8			
32	83000062	Cap Turntable			
33	82111874	Turntable 24" Square			
34	82107488	Pin Slide Guide			
35	84399981	Washer 12 (13x24x2,5)			
36	84399864	Seeger Ring D.12			
37	82006393	Clamp Cover			
38	84398037	Screw 10x1,25x25 12.9			
39	83002297	Clamp Oversize			

# Inflation Group



Ref	Part No.	Description	Ref	Part No.	Description
1	84399890	Screw M6x20 - 8.8	50	86602899	Tank 18lt D.245
2	84399889	Nut M6	51	8107985	Flanged Air Gauge W/Fasteners
3	84399892	Screw M6x20 - 8.8	53	84198435	Valve Safety 1/8" O/4 Bar
4	82110288	Pedal Gt	54	84198642	Sleeve Collar F 1"
5	83010287	Pedal Support Gt	55	83000144	Hose Rilsan D.8x6 L=910
6	82009718	Valve Unit	57	84399946	Screw M8x16 - 8.8
7	83008005	Limit Stop Screw Support	58	82008871	Pneum. Control Unit Gt
8	84398890	Bolt 6x40 4.6	59	84299354	Pushbutton Relief
9	84298942	Spring D.20x26	60	84399256	Washer 1/4" D.13x19x1,5
10	84399999	Screw M6x25 - 8.8	61	83002353	Distribution Frame
11	84399893	Nut Self-Locking M6	62	84198993	Quick Union 1/8" - 6
12	83000141	Spring	63	83002599	Hose Elastolan 6x4 L=170
13	84398807	Washer 14 (15x28x2,5)	64	86602342	Gauge Pressure Unit Gt
14	84399100	Split Pin D.3,2x30	66	84399892	Screw M6x20 - 8.8
15	84399998	Washer 6 (6,4x12x1,6)	67	83000670	Union, Manifold
16	84399897	Screw M14x25 - 8.8	68	8111186	Pressure Limiter Assembly
17	84399895	Nut Self-Locking M4	69	83008992	Pressure Regulator Bracket
18	83001853	Valve Control Lever	70	84399300	Screw M6 x 12 8.8
19	83002109	Hose Rilsan D.14x11 L=1070	71	84399998	Washer M6 (6,4 x 12 x 1,6)
20	84399899	Screw Self-Tapping 3,5x13	72	84399299	Screw 6 x 30 8.8
21	83001585	Flange For Valve 82002444	73	8109468	Pressure Repeater
22	84299000	O-Ring 9,8x3,85	74	8110497	Fitting-90 Deg. Male Elbow
23	83001849	Gt Pneumatic Valve Shaft	75	8182037	Nylon Tube 1/4" OD x 10" Lg.
24	83001584	Spacer For Valve 82002444	76	8103649	Ø1/4" x 12" Hose
25	82002444	Valve Distribution	77	8182035	Male St Fit. 1/8 NPT x 1/4 Tube
26	84198954	Quick Union 6510 1/8" - 8	78	8111083	Regulator
27	84199161	Plug	79	8109472	1/8" Inline Filter
28	84199888	T-Union	80	8110496	Volumn Chamber
29	84199098	Quick Union 1/8" 6-4	81	8109471	1/8" Brass Hex Nipple
30	83001382	Hose Rilsan D.8x6 L=850	82	8101428	Hose Clamp-1/4 ID Hose
31	84198531	Valve Pneumatic 1"	83	8110325	1/4" NPT Male Run Tee
32	84198884	Union 6510 1/4"	84	8109466	Valve-Piloted
33	83002110	Hose Rilsan D.6x4 L=580	85	8111255	Spl Tee=1/4 NPT x 3/8 x 1/4 Tube
34	84198298	Union 6510 1/4" - 6	86	84196354	Valve 400 1/4" F-F
35	84198852	Union 3 Pcs. (125) 1" F/M 90'	87	84199026	Union 1/4"
36	83005041	Pipe 1"	88	84198883	Quick Union 6500 1/4" - 8
37	84198173	Regulator 1/4" 0-3,5 Bar	89	84198951	Regulator
38	84198884	Union 6510 1/4"	90	8182827	Filter Lubricator Unit
39	83000635	Hose Rilsan D.8x6 L=2300	91	84199726	Nipple 1/4"
40	84398945	Screw 4x12,6	92	84198973	Union-Tee
41	84399837	Screw M8x20 10.9	93	84198908	Union 2020 1/4" F/M 90
42	84399976	Nut M8	94	86604693	Filter Lubricator Bracket
43	84198703	Valve Safety 1/4"	95	84399300	Screw M6x12 - 8.8
44	84198908	Union 2020 1/4" F/M			
45	84198578	Rotating Union 1/4" - 8-6			
46	83010798	Hose Rilsan D. 8x6 L=440			
47	82008872	Hose Gt Control Unit L=1400			
49	84199795	Reduction Piece 1/2" - 1/4"			

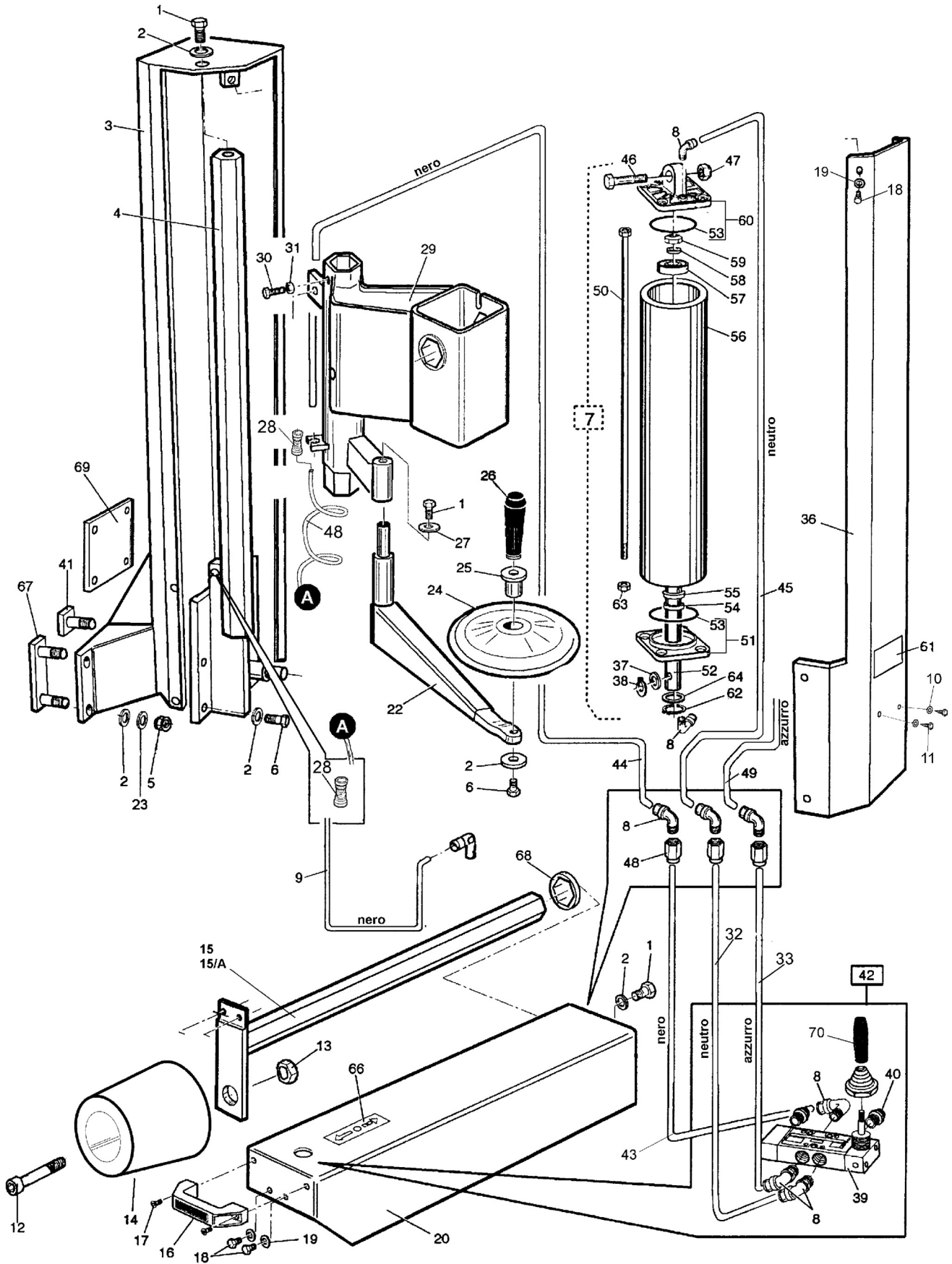
# Left Helpers and Support





Ref	Part No.	Description	Ref	Part No.	Description
1	8109888	Decal 40 PSI Warning	40	84198285	Valve 5-Way
2	86208820	P.A.3 Cover	41	83002928	Spiral D.6x4 L=1200
3	84399120	Screw 10x20 10.9	42	84199610	Silencer 1/8"
4	83009088	Washer D. 10x45x4	43	82006996	Valve Unit
5	84198618	Union 6520 1/8" - 6	44	83000146	Hose Rilsan D.6x4 L=750
6	84399998	Washer 6 (6,4x12x1,6)	45	83001630	Hose Rilsan 6x4 L=960
7	84398723	Screw 6x12 - 8.8	46	84399786	Screw M10x30 - 8.8
8	83000599	Pin M12 L=50	47	84399969	Nut M10
9	84399865	Nut Self-Locking M12	48	83008860	Stud Bolt M8x1,25x437
10	82008857	Cylinder 24" Turntable	49	82015178	Flange
11	84198993	Quick Union 1/8" - 6	50	84298822	O-Ring D.68,26x3,53
12	86208981	P.A.3 Slide	51	84399865	Nut M12
13	83002311	Washer D.10x45x4	52	84398753	Washer D.12,5x30x3
14	84399966	Screw M10x20 - 8.8	53	84198856	Piston D.75
15	84398901	Screw 10x20	54	83008858	Cylinder Liner L=405
16	84399967	Nut M10	55	83199601	Scraper
17	84398107	Screw Te 16x180 - 8.8	56	84298823	Guide In Nylon
18	84399828	Washer 16 (17x30x3)	57	83008859	Cylinder Shaft D.20 L=458
19	84399963	Nut Self-Locking M16	58	82015177	Front Flange
20	86207542	Arm 1 P.A.2	62	83199599	Seeger Ring D.30
21	83004840	Decal Arrows	63	84397678	Nut Flanged M8
22	86607545	Arm Bead Breaking Disk L=425	64	84398146	Steel Shim 24x30x0,3
23	83000218	Hose Rilsan 6x4 L=1200	65	83007864	Spacer 12x18x45
24	84399378	Washer D.10 (10,5x21x2)	66	84399398	Screw 12x85 - 8.8
25	83006886	Disk Bead Breaking	67	83009013	Limit Stop Screw Support
26	83006862	Disk Upper Pin	68	84399976	Nut M8
27	82012683	Handle With Pin M10x20	69	84397527	Screw 8x30 - 10.9
28	86208982	Arm 2 P.A.3	70	84399827	Screw M8x20 - 8.8
29	82108983	Arm 3 P.A.3	71	83009014	Spring Limit Stop
30	86208819	P.A.3 Base	72	84399976	Nut M8
31	82108818	Arm Vertical P.A.3	73	8183597	Decal - Tire Bleed Valve
32	83007781	Fixing Plate	75	83010284	5-Way Valve Handle
33	821132101	Arm 3 Slide			
34	83006904	Bead Pressing Tool 50x90x110			
35	84399863	Washer 8 (9x24x2)			
36	84399298	Screw M8x16 - 8.8			
37	86206888	Support			
38	86206887	P.A.2 Base Column			
39	84399228	Screw Te 10x25 - 8.8			

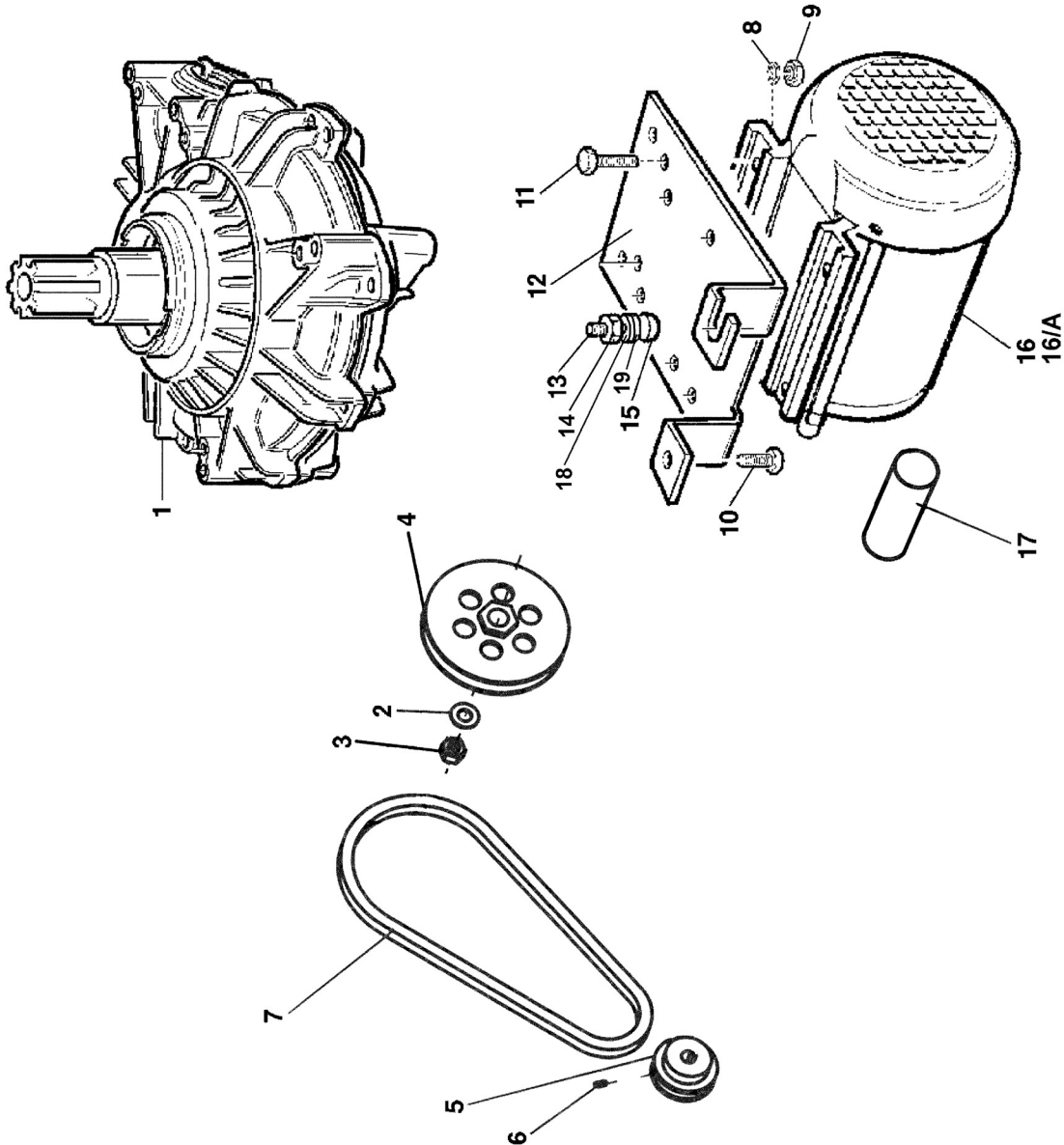
# Right Helpers and Support



Ref	Part No.	Description	Ref	Part No.	Description
1	8439966	Screw M10x20 - 8.8	40	84199610	Silencer 1/8"
2	84399378	Washer D.10 (10,5x21x2)	41	82108784	Screw Antirotation Help 3
3	86208816	Base Help 4	42	82006996	Valve Unit
4	82108815	Arm Vertical Help 4	43	83000143	Hose Rilsan D.6x4 L=480
5	84399969	Nut M10	44	83000218	Hose Rilsan 6x4 L=1200
6	84399786	Screw M10x30 - 8.8	45	83001630	Hose Rilsan 6x4 L=960
7	82008332	Cylinder Unit Help 3	46	83000599	Pin M12 L=50
8	84198618	Union 6520 1/8" - 6	47	84399865	Nut Self-Locking M12
9	83002110	Hose Rilsan D.6x4 L=580	48	84198904	Union 6463 1/8" - 6
12	84397454	Screw 20x90 - 8.8	49	83002709	Hose Rilsan 6-4 L=1570
13	84399810	Nut M20	50	83008334	Stud Bolt 8x1,25x522
14	83008433	Bead Breaker Roller D.102 L=120	51	82015177	Front Flange
15	82107115	Arm Horizontal	52	83006649	Cylinder Shaft L=559
16	84297851	Handle	53	84298822	O-Ring D.68,26x3,53
17	84398672	Screw 6x16 - 10.9	54	84298823	Guide In Nylon
18	84398723	Screw 6x12 - 8.8	55	83199601	Scraper
19	84399998	Washer 6 (6,4x12x1,6)	56	83008333	Cylinder Liner Help 3 L=490
20	86206853	Cover Horizontal/Arm	57	84198856	Piston D.75
21	83002928	Spiral D.6x4 L=1200	58	84398753	Washer D.12,5x30x3
22	86607546	Arm Bead Breaking Disk L=605	59	84399865	Nut M12
23	84398662	Washer Grower D.10	60	82015178	Flange
24	83006886	Disk Bead Breaking	61	8181232	Filter Lubricator Decal
25	83006862	Disk Upper Pin	62	83199599	Seeger Ring D.30
26	82012683	Handle With Pin M10x20	63	84397678	Nut Flanged M8
27	83002311	Washer D.10x45x4	64	84398146	Steel Shim 24x30x0,3
28	84198993	Quick Union 1/8" - 6	65	84399976	Nut M8
29	86615666	Slide Help 3	66	83004840	Decal Arrows
30	84398901	Screw 10x20	67	82108782	U-Bolt Help 3 Fastening
31	84399967	Nut M10	68	83002601	Shock Absorber Mounting Head
36	86208817	Cover Help 4	69	83009675	Fixing Plate Help 4
37	84399981	Washer 12 (13x24x2,5)	70	83010284	5-Way Valve Handle
38	84399864	Seeger Ring D.12			
39	84198285	Valve 5-Way			

# Motor and Transmission

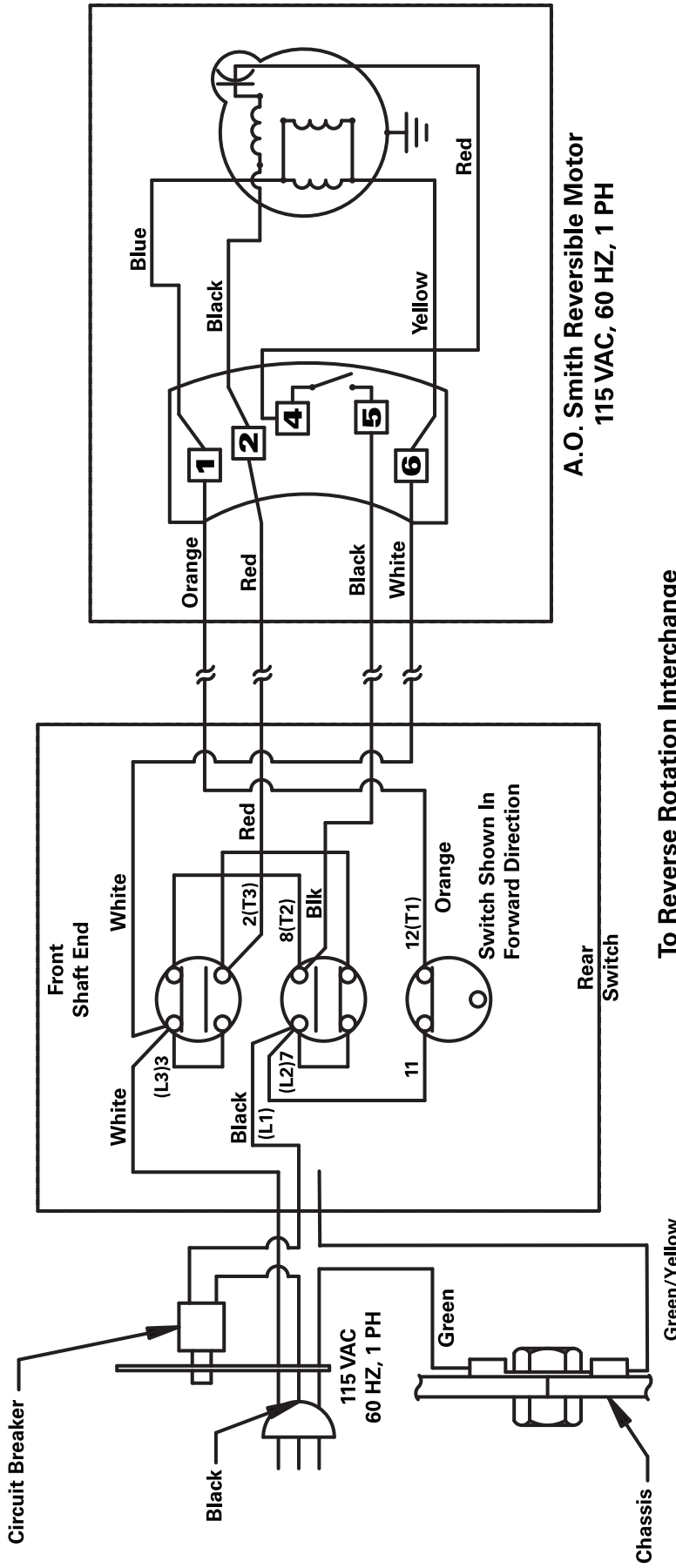
Ref	Part No.	Description
1	84299925	Transmission
2	84398807	Washer 14 (15x28x2,5)
3	84396941	Nut M14
4	83010863	Pulley Gearbox
5	8181204	Pulley Motor
6	8180217	5/16-18 X 3/8" Shss Gr5
7	84299923	V-Belt A23
8	84399829	Washer 8 (8,4x16x1,5)
9	84399976	Nut M8
10	84399966	Screw M10x20 - 8.8
11	84399935	Screw Te M8x25 - 8.8
12	83010803	Motor Support
13	84399880	Screw M10x40 - 8.8
14	84399969	Nut M10
15	83000164	Belt-Stretcher Shoe
16	8184372	Motor 2 Hp 115v 1ph
17	8180638	Motor Capacitor Only-





# Wiring Diagram

## Electrical Diagram 115 Volt 60 HZ

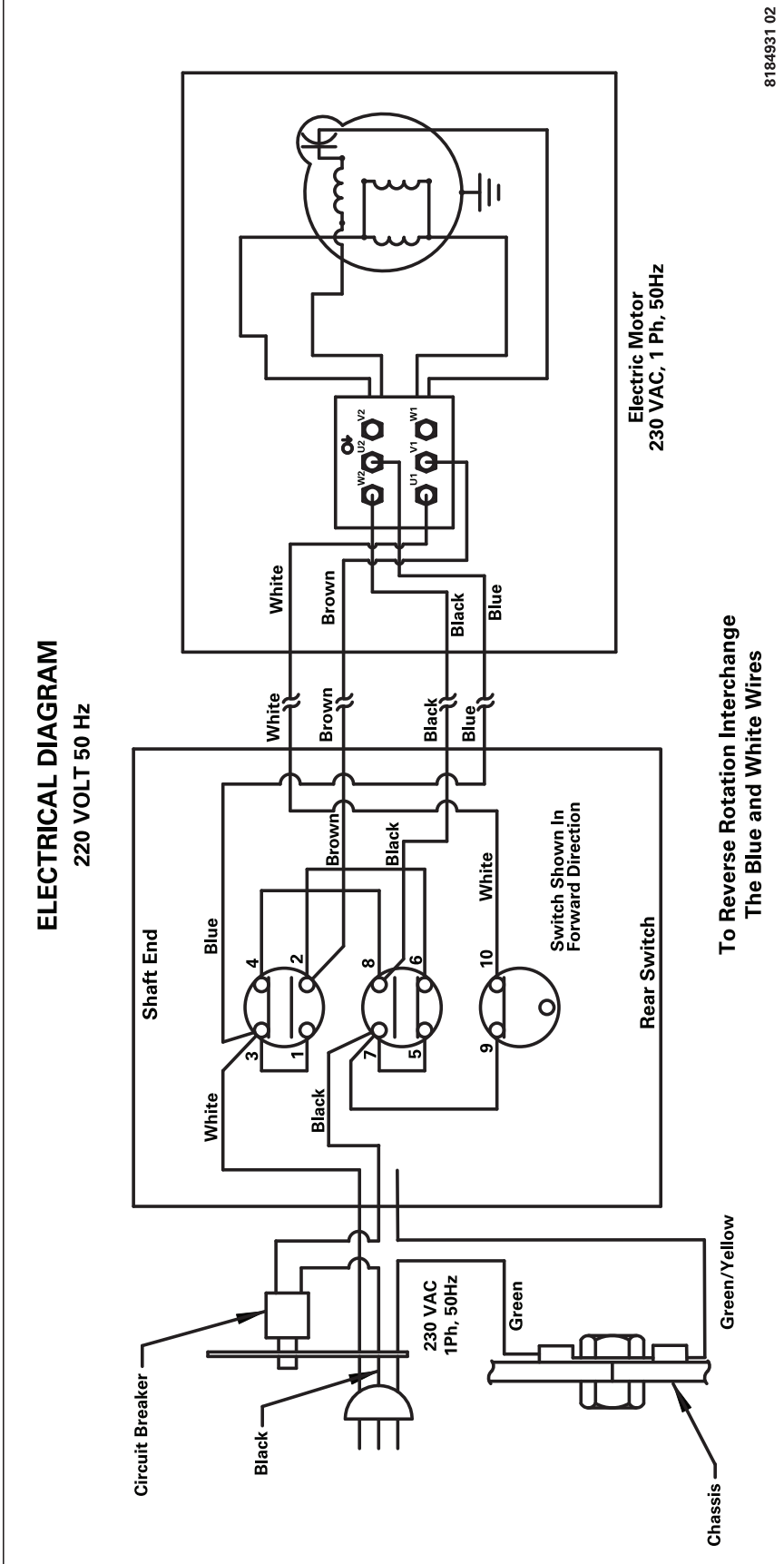


A.O. Smith Reversible Motor  
115 VAC, 60 HZ, 1 PH

To Reverse Rotation Interchange  
the Red and Black Wires

8184387 04

# Wiring Diagram



# Rim Clamp® Tire Changer

## All-Air Unit Compressed Air Requirements

COATS® 9024E Rim Clamp® tire changers require a compressed air power source and 115V, 25AMP electrical supply. Refer to the table below for exact specifications.

Tire Changer Model	Compressor Size
9024E	5 HP

## Oiler and Water Separator Maintenance

The oiler and water separator (on units so equipped) require weekly service. Oil and water levels (indicated on the level gauge on the side of each bowl) should be checked regularly

**1.** On units without automatic drain (manufactured before August 1996), drain the water from the separator by unscrewing the petcock on the bottom of the bowl. Allow water to drain and tighten petcock securely by hand.

**2.** Add oil to the oiler if the fluid level is greater than 1/4" from the top of the gauge. Remove the filler plug in the top of the oiler, and add SAE 10W non-detergent oil or an air tool oil to bring the level up to 1/4" from the top of the gauge. Replace the filler plug and clean up any spilled oil.

**3.** On units manufactured before August 1996, adjust the oil flow by pulling the red flow adjustment ring up and turning it to increase or decrease the flow. Push the ring down to lock. Watch the formation of oil drops in the see-through oil chamber. Continually cycle the bead loosener through full strokes and count the drops during the cycles. The delivery of oil to the air line should be about 1 drop per 10 cylinder cycles. Adjust the flow as required.

**Note:** An alternate adjustment method for the oil flow is to turn the knob fully clockwise to stop the flow, then turn it back counterclockwise 1/4 turn.

## Transmission Lubrication

The transmission in this machine is a sealed unit packed with grease and should need no regular maintenance.

## Air Gauge Check and Recalibration

**1.** Inflate a standard 15" passenger car tire/wheel assembly to 32 PSI. Use a high quality stick-type pressure gauge to verify the pressure. Attach the tire changer's inflation hose to the valve stem and check the pressure reading on the air gauge. If it does not read 32 PSI, recalibrate the gauge.

**2.** Remove the screw-on lens. Loosen the 2 screws on the face of the gauge. Loosen them just enough so that the gauge face moves. Do not remove the screws.

**3.** Rotate the gauge face until the 32 PSI mark is aligned with the gauge needle. Tighten the 2 screws and replace the lens.

## Danger, Warning, Caution, and Instructional Decals

Always make the cleaning of these important decals a part of your regular maintenance routine. If they are damaged or illegible, replace them immediately. Your safety, and the safety of others is involved!