

COATS®

1000/1000D

Solid State Computer Wheel Balancer

1000/1000D Estado Sólido

Balanceadora de Ruedas con Computadora



Parts Identification e Identificación de Partes

READ these instructions before placing unit in service KEEP these and other materials delivered with the unit in a binder near the machine for ease of reference by supervisors and operators.

LEER estas instrucciones antes de poner la unidad en servicio. CONSERVAR estos y otros documentos entregados con la máquina, en una carpeta cerca de la misma para facilitar la consulta por los supervisores y operarios.

HENNESSY INDUSTRIES, INC.

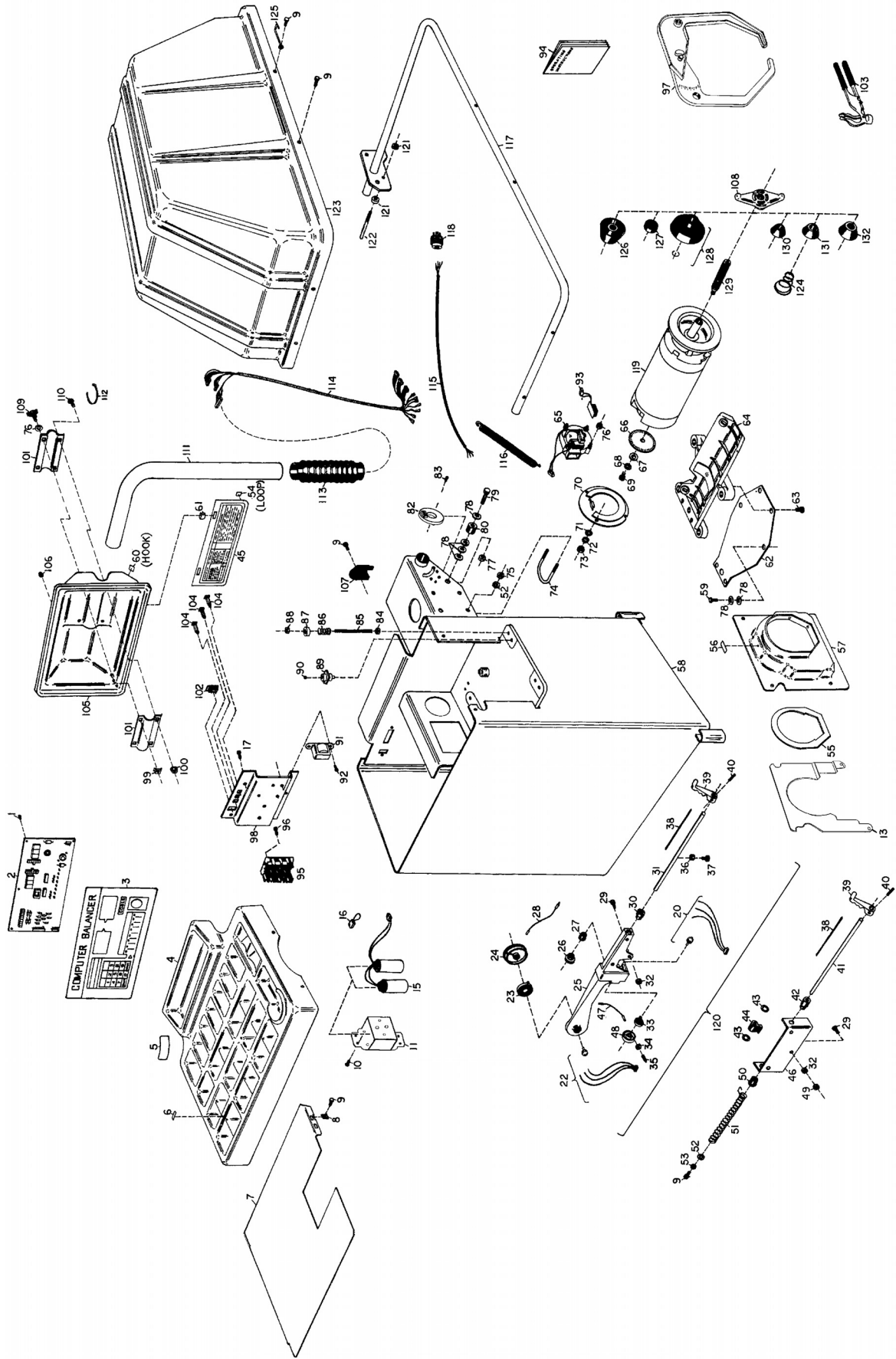
1601 J. P. Hennessy Drive, LaVergne, TN USA 37086-3565 615/641-7533 800/688-6359

HENNESSY INDUSTRIES INC. Manufacturer of AMMCO®, COATS® and BADA® Automotive Service Equipment and Tools.

Manual Part No.: 85009055 00

Revision: 12/07

1000/1000D Parts Identification
1000/1000D Identificación de Partes



ITEM	PART NO.	DESCRIPTION	ITEM	PART NO.	DESCRIPTION	ITEM	PART NO.	DESCRIPTION	ITEM	PART NO.	DESCRIPTION	ITEM	PART NO.	DESCRIPTION	ITEM	PART NO.	DESCRIPTION
1	8301063	Screw, #6-32 X 1/2" PHM	47	8110913	"D" Cable	94	85009054	Operations Manual	94	85009054	Operations Manual	131	8110411	Cone, Medium			
2	8111886	PCB Assembly	48	8110914	"D" Pulley	95	8113903	Motor Control Board	95	8113903	Motor Control Board	132	8112099	Cone, Medium, 40MM			
3	8110721	Touch Panel, 1000D	50	8308074	Bushing, Rear	96	8113996	Standoff, 8-32 male, 3/4"	96	8113996	Standoff, 8-32 male, 3/4"	132	8110412	Cone, Large			
4	8110947	Touch Panel, 1000	51	8308023	Spring	97	8309011	Caliper Assembly	97	8309011	Caliper Assembly	133	8112100	Cone, Large, 40MM			
5	8111035	Weight Tray	52	8301032	Washer 3/8, Flat	98	8110821	Power Panel	98	8110821	Power Panel	133	8111918	Trim-Short Strip			
6	8113927	Decal, "Caution"	53	8301142	Washer, 1/4 Lock	99	8143044	Nut, 3/8-16 Tinnerman	99	8143044	Nut, 3/8-16 Tinnerman	134	8111919	Trim-Long Strip			
7	8314005	Decals, Weight Tray Bins	54	8110956	Velcro Patch, Loop	100	8106303	Nut, 3/8-16 WH	100	8106303	Nut, 3/8-16 WH	135	8111920	Pad			
8	8110664	Shield, Weight Tray	55	8308536	Gasket, Motor	101	8106795	Clamp, Pod 102	101	8106795	Clamp, Pod 102	136	8112199	Sleeve			
9	8106304	Nut, Tinnerman 1/4-20	56	8120446	Decal, Rotation	102	8305802	Switch, ON/OFF	102	8305802	Switch, ON/OFF	139	*8114467	Hood Switch Bracket			
10	8106301	Screw, 1/4" Hex Self-Tap	57	8110962	Cover, Motor	103	8113175	Weight Hammer/Pliers	103	8113175	Weight Hammer/Pliers	140	*8113922	Adjuster			
11	8111542	Screw, #8-32 X 5/8" SEM	58	8111048	Chassis	104	8111218	Breaker, 2 Amp	104	8111218	Breaker, 2 Amp	140	*8113922	Screw, Button Hd Soc. Cap 10/32 x 3/4"			
12	8110537	Panel, Capacitor	59	**8114151	Special Shoulder Bolt	105	8111031	Pod	105	8111031	Pod	141	*8112317	Nut, Kep #10-32			
13	8111308	Shield Motor Cover	60	8110955	Velcro Patch, Hook	106	8111055	Nut, #6-32 Acorn	106	8111055	Nut, #6-32 Acorn						
15	8112356	Capacitor	61	8111038	Latch, Instruction Card	107	8111029	Cover, Rear Harness	107	8111029	Cover, Rear Harness						
16	8112224	Jumper, Assembly	62	8112182	Plate, Flex	108	8110543	Hub Nut	108	8110543	Hub Nut						
17	8110560	Screw, #8-32x3/4	63	8106302	Scr 3/8-16 x .875 HHC	109	8112103	40MM Hub Nut	109	8112103	40MM Hub Nut						
20	8110919	Assembly, "D" Pot	64	8110430	Whiz Lock	110	8110817	Knob	110	8110817	Knob						
22	8110918	"A" Pot Assembly	65	8110994	Cradle, Motor	111	8110823	Bolt, 3/8-16 Carriage	111	8110823	Bolt, 3/8-16 Carriage						
23	8308545	"A" Spring	66	8308817	Assembly, Fan	112	8110805	Support, Pod Tube	112	8110805	Support, Pod Tube						
24	8110915	"A" Pulley	67	8107635	Shutter, Rotary	113	8111056	Tie, Cable, 11"	113	8111056	Tie, Cable, 11"						
25	8308555	Bracket, Dia Cast, Arm	68	8104200	Washer, Flat	114	8112839	Harness, Signal	114	8112839	Harness, Signal						
26	8110917	Shaft, Pulley	69	8301016	Bolt, Shoulder, 3/8x3/8	115	8113101	Cord, Power	115	8113101	Cord, Power						
27	8308074	Bushing, Arm Rear	70	8308513	Cover, Bell, Rear End	116	8308062	Spring, Hood	116	8308062	Spring, Hood						
28	8110916	"A" Cable	71	8301806	Washer, #10 Flat	117	8112843	Hood Bar	117	8112843	Hood Bar						
29	8301534	Screw, 1/4-20x1 HH Grade 5	72	8301806	Washer, #10 Spring Lock	118	8140786	Plug, 220V, 3 PH	118	8140786	Plug, 220V, 3 PH						
30	8308535	Stop, Front	73	8301804	Nut, #10-32 Hex	119	8112945	Motor	119	8112945	Motor						
31	8308527	Stop, Rod	74	8110789	Bolt, 5/16-18 "U"	120	8110920	Distance Gauge Assembly	120	8110920	Distance Gauge Assembly						
32	8301143	Nut, 1/4-20 Hex	75	8181183	Nut, 5/16-18 Nyloc	121	924724	Nut, 5/16-18 Flange,	121	924724	Nut, 5/16-18 Flange,						
33	8308546	"D" Spring	76	8301084	Nut, #8-32 Kep	122	8112731	Serrated Face	122	8112731	Serrated Face						
34	8110911	Nut, #10-32 Hex	77	8301122	Nut, 1/2-13 Hex	123	8308060	Rod-Actuator, Switches	123	8308060	Rod-Actuator, Switches						
35	8110912	Pin, #10-32 Spring Plunger	78	8301121	Washer, 1/2 Flat	124	8308820	Hood	124	8308820	Hood						
36	8308554	Roller	79	8301120	Bolt, 1/2-13x2-1/2 HH	125	8112107	Spring, Back Cone	125	8112107	Spring, Back Cone						
37	8301537	Screw Shoulder, 5/16 x .500 SHC	80	8309008	Stop, Hood, Rubber	126	8308095	Adapter, Large	126	8308095	Adapter, Large						
38	8111645	Scale	81	8106303	Screw, 1/4-20x3/4 LG	127	8308105	Ring, No-Mar	127	8308105	Ring, No-Mar						
39	8308550	Arm	82	8114166	Switch, Hood Assembly	128	8112102	Ring, No-Mar, 40MM	128	8112102	Ring, No-Mar, 40MM						
40	8100602	Roll Pin	83	8106301	Nut, 3/8-16 Hex	129	8110542	Pressure Cup	129	8110542	Pressure Cup						
41	8308078	Rod	84	8106303	Nut, 3/8-16 Hex	130	8113083	Stub Shaft, 40MM	130	8113083	Stub Shaft, 40MM						
42	8110807	Bushing, Front	85	8108727	Rod, Threaded												
43	8143956	Retainer	86	8307008	Spring, Piezo												
44	8110168	Stop	87	8308036	Retainer, Piezo Spring												
45	8110966	Instruction Card, Cal/MM	88	8301035	Nut, 3/8-16 Nyloc												
46	8110806	Bracket	89	8114473	Piezo Kit												
			90	8301017	Ball, 1/2, Steel												
			91	8113023	Transformer												
			92	8301082	Screw, #8-32x1/2 PHM												
			93	8110923	Assembly, Encoder												

* Not Shown
** Before S/N 0606304914 use 8120325

