

BASELINE™

BY GOATS®

Rim Clamp® Tire Changers

For servicing single piece automotive and most light truck tire/wheel assemblies.



Model 200 Shown

Parts Identification

READ these instructions before placing unit in service. KEEP these and other materials delivered with the unit in a binder near the machine for ease of reference by supervisors and operators.

Parts Identification

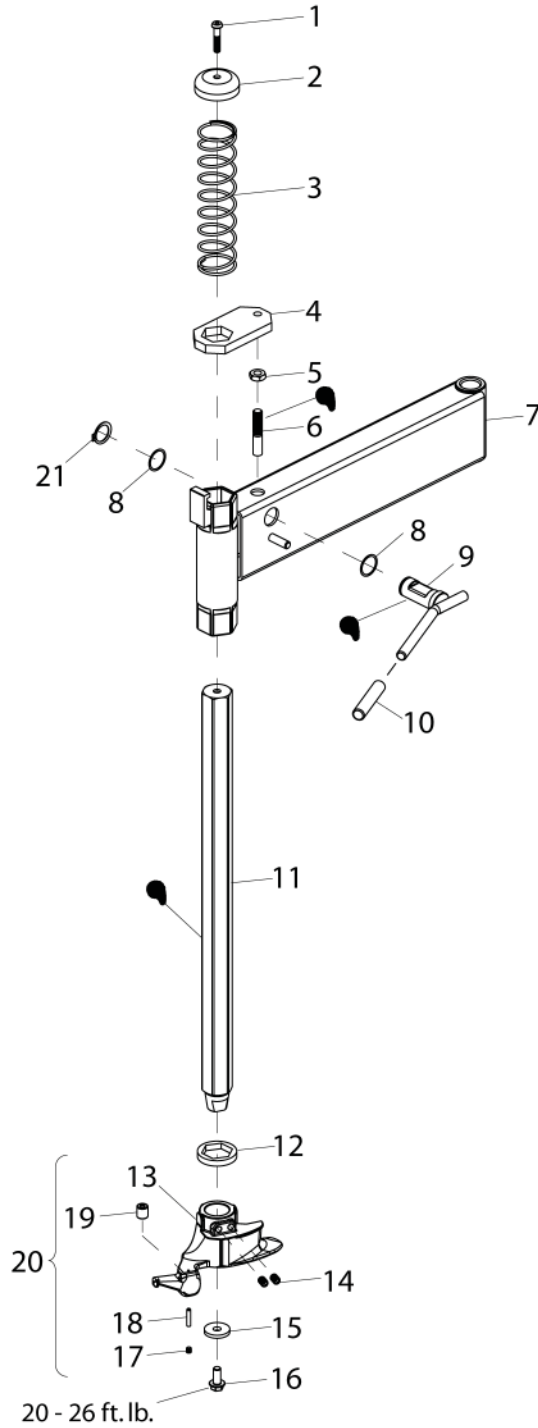
The following pages include parts breakdowns with exploded view illustrations to help with ordering replacement or spare kits. Assemblies are noted where it is recommended that individual parts not be ordered separately. Note that the parts view illustrations are for multiple models and not all parts shown are on all models. Every effort is made to supply accurate exploded views, however, due to interim changes in manufacturing operations, some units may not be exactly as illustrated.

Table of Contents

Parts Identification	2
Swing Arm Assembly	4
Pressure & Inflation Bracket Assemblies....	5
Chassis Assembly.....	6
BL Arm Assembly.....	6
Foot Pedal Assembly	7
Table Top & Shaft Housing Assemblies	8
Robo-Assist™ Assembly	9
* Hose Reels.....	9
Robo-Assist Valve Assembly.....	9
Electrical Diagram	10
Pneumatic Diagram.....	11
Baseline™ Tire Changer.....	12

Swing Arm Assembly

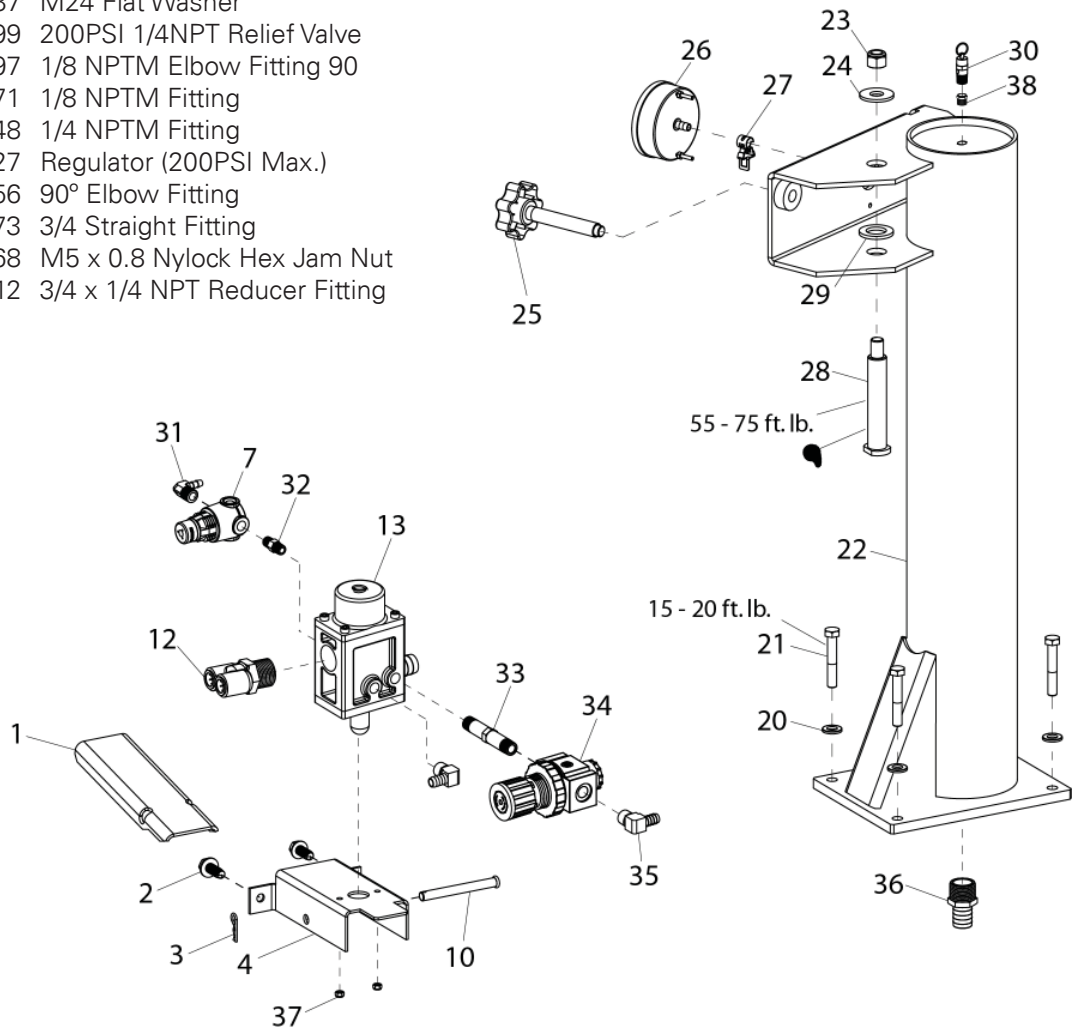
Item No	Part No.	Description
1	85607535	M8 x 1.25 x 20mm BHSCS Screw
2	85606864	Vertical Slide Cap
3	85607890	Vertical Slide Spring
4	85606856	Vertical Slide Lock Plate
5	85606860	M12 x 1.75 Jam Nut
6	85606861	Lock Plate Lift Pin
7	85606845	Swing Arm Assembly
8	85606859	Lock Handle Shim
9	85606851	Lock Handle/Lift Cam W/C
10	7000230	Handle Grip
11	85606855	Vertical Slide Shaft
12	85606857	Rubber Stop Bumper
13	8182753	Mount/Demount Duckhead
14	8130026	3/8-16 x 1/2 SHSSCP
15	8182027	Washer
16	85607525	M10 x 20mm HSWF Screw
17	8140667	1/4-20 x 1/4 SHSSCP
18	8182786	Dowel Pin
19	8182787	Roller
20	8182788	Mount/Demount Head Assy.
21	85606862	Retaining Ring-External



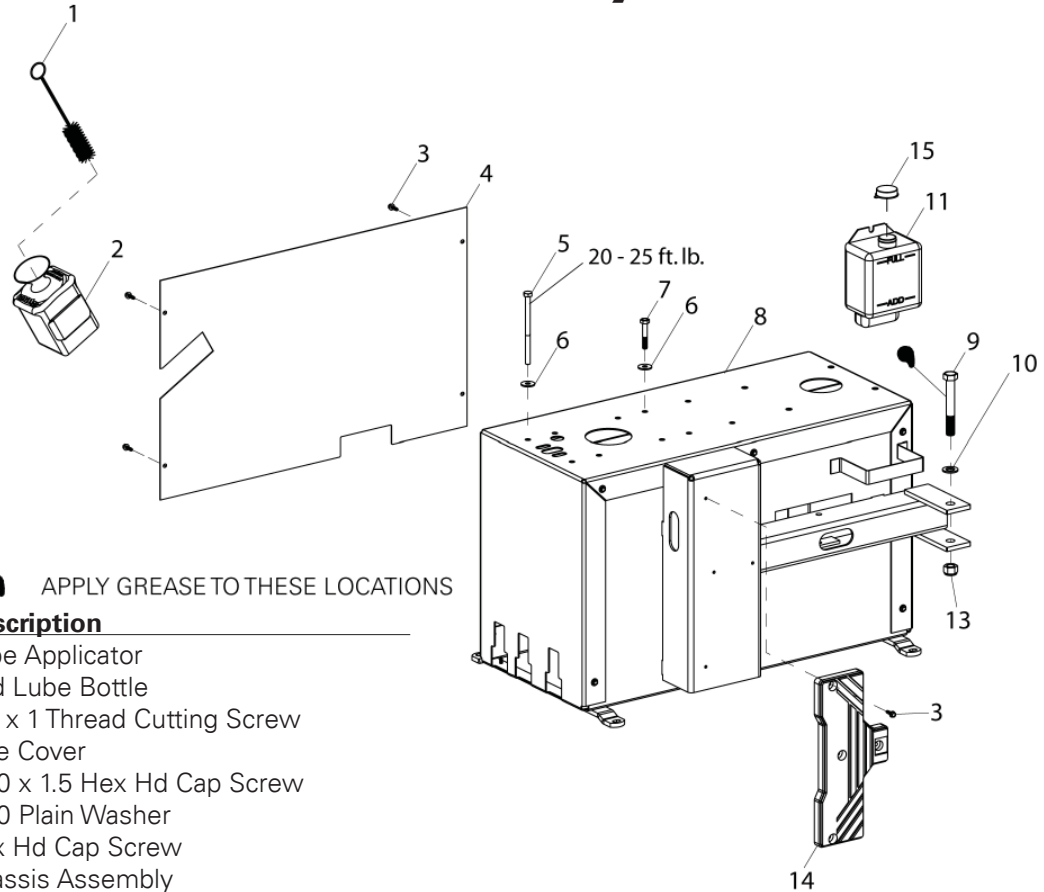
APPLY GREASE TO THESE LOCATIONS

Pressure & Inflation Bracket Assemblies

Item No	Part No.	Description
1	85606995	Inflation Bracket Pedal
2	8102459	M10x1.5 Thread Cutting Bolt
3	8107407	Hitch Pin
4	85606994	Inflation Bracket
7	8111083	Preset Regulator, 60PSI
10	8180103	.375 x 3.250 Clevis Pin
12	85607184	3/4-14 NPT Y Fitting
13	85606722	Dual Stage Inflation Valve
20	85606917	M12 Plain Washer
21	85606984	M12 x 1.75 HHCS Bolt
22	85606762	Air Receiver Tower
23	85606985	M16 x 2 Jam Nut
24	85606988	M16 Flat Washer
25	85606989	Adjusting Knob Assembly
26	8766170	Air Gauge
27	85606362	Hose Clamp
28	85606986	Pivot Bolt
29	85606987	M24 Flat Washer
30	8182599	200PSI 1/4NPT Relief Valve
31	8110497	1/8 NPTM Elbow Fitting 90
32	8109471	1/8 NPTM Fitting
33	85607348	1/4 NPTM Fitting
34	85000627	Regulator (200PSI Max.)
35	8184256	90° Elbow Fitting
36	8104573	3/4 Straight Fitting
37	85607368	M5 x 0.8 Nylock Hex Jam Nut
38	8101312	3/4 x 1/4 NPT Reducer Fitting



Chassis Assembly



APPLY GREASE TO THESE LOCATIONS

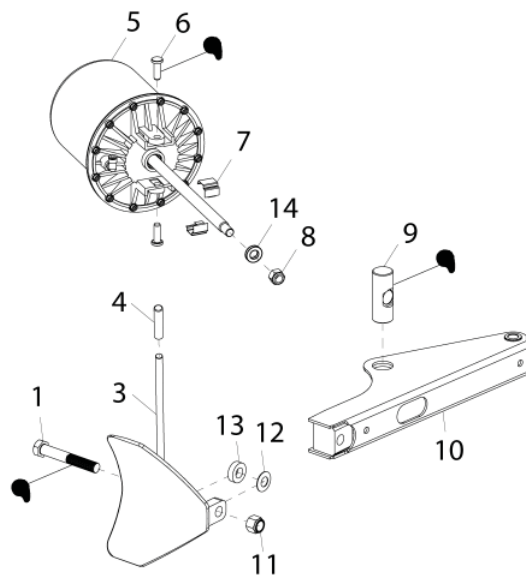
Item No Part No. Description

1	8000491	Lube Applicator
2	8106259	Red Lube Bottle
3	8106301	M6 x 1 Thread Cutting Screw
4	85606791	Side Cover
5	85606979	M10 x 1.5 Hex Hd Cap Screw
6	85606982	M10 Plain Washer
7	85607258	Hex Hd Cap Screw
8	85607020	Chassis Assembly
9	85607352	M18 x 2.5-130 Bolt
10	85607359	M18 Plain Washer
11	8185629	Lubricating Oil Reservoir
13	85607351	M18 x 2.5 Nylock Nut
14	85607027	B.L. Pad
15	8185630	Lube Oil Reservoir Cap

BL Arm Assembly

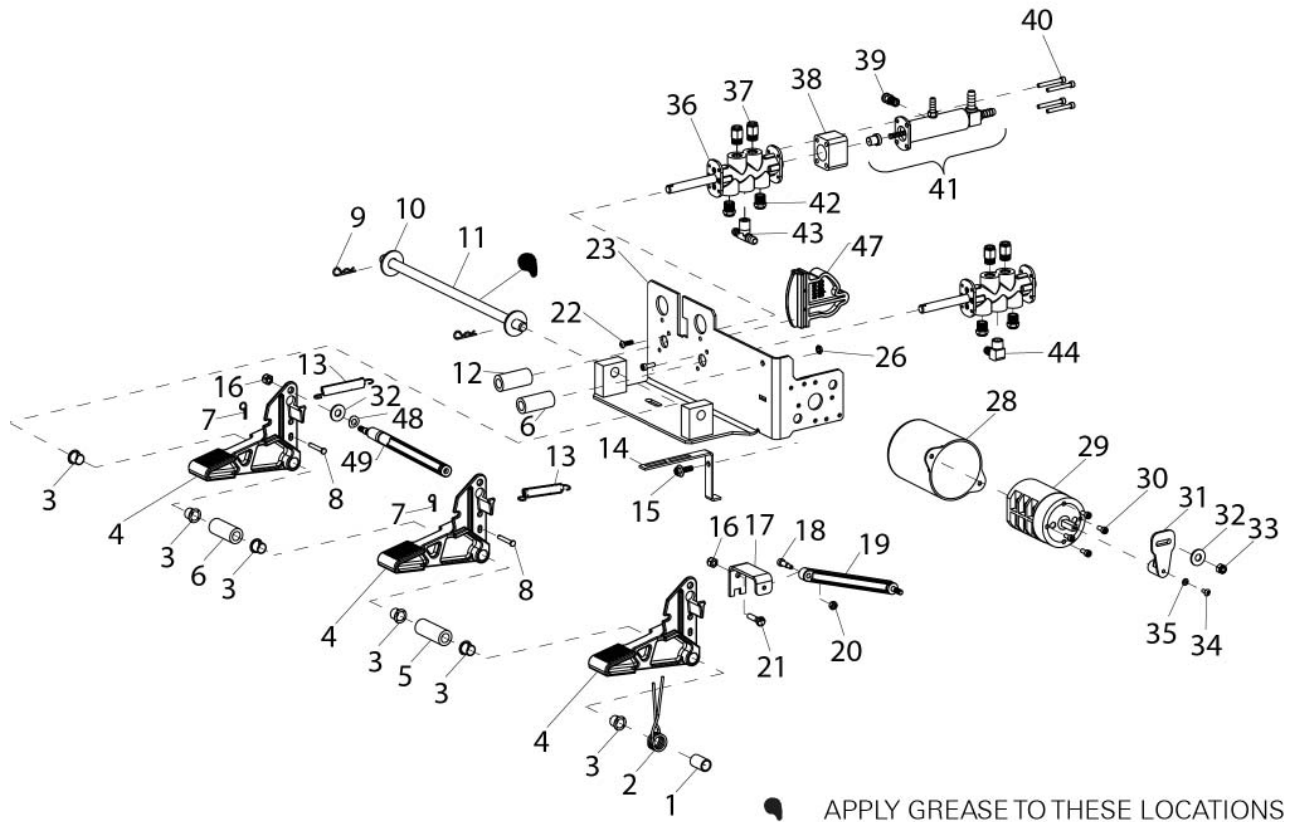
Item No Part No. Description

1	85607352	M8 x 2.5-130 Bolt
3	85607413	B.L. Shoe, W/C
4	7000230	1/2 x 3 Grip Handle
5	85607145	B.L. Cylinder Assembly
6	85606965	Clevis Pin
7	85607250	Clevis Clip Retainer
8	85606985	M16 x 2 Hex Jam Nut
9	8182550	Pivot Pin B.L. Cylinder Rod
10	85607412	B.L. Arm
11	85607351	M18 x 2.5 Hex Nylock Nut
12	85607358	M18 Conical Washer
13	8182557	B.L. Spacer
14	85607419	17 x 30 x 6mm Flat Washerr



APPLY GREASE TO THESE LOCATIONS

Foot Pedal Assembly

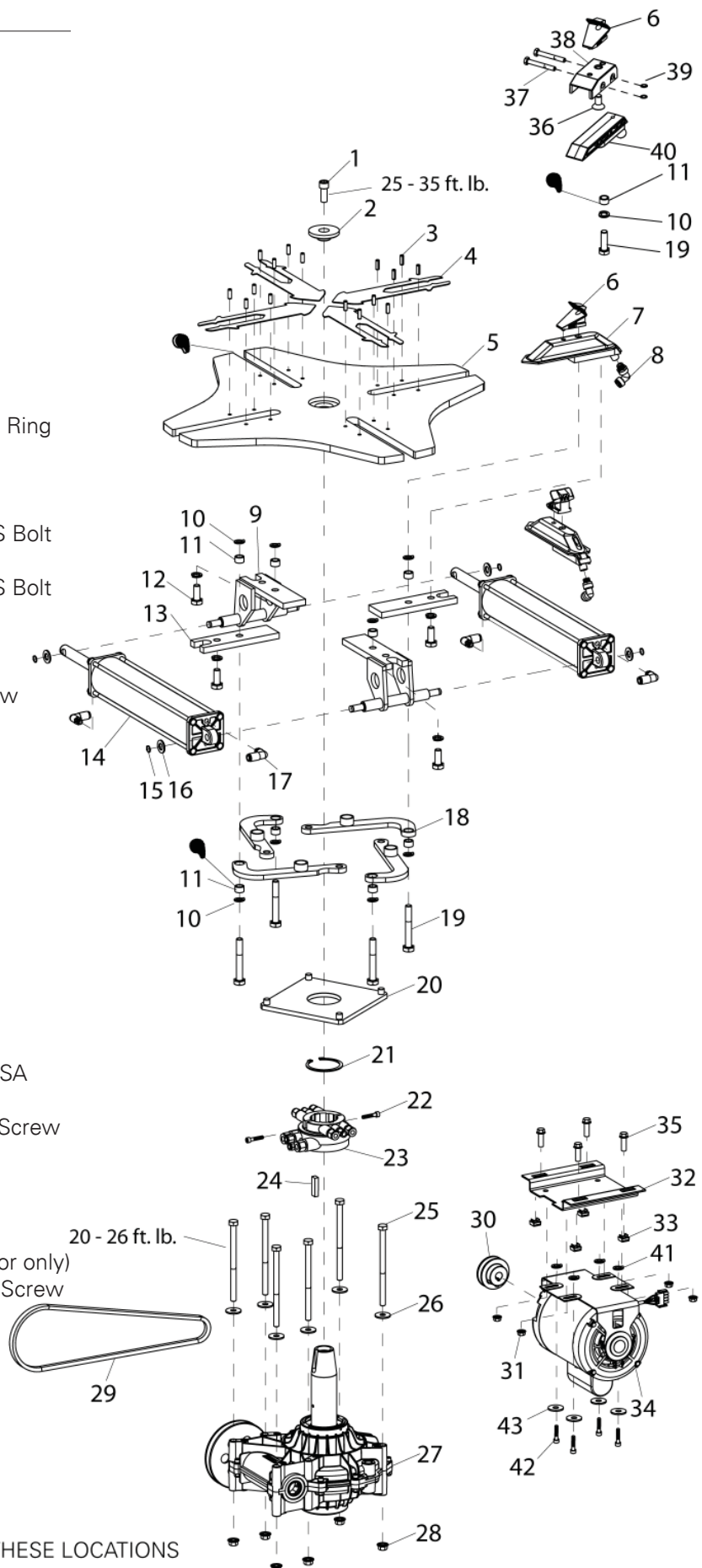


Item No	Part No.	Description	Item No	Part No.	Description
1	85606974	Switch Spring Sleeve	26	8143169	1/4-20 Whiz Lock Nut
2	8181707	Torsion Spring	27	*8150124	4-inch Cable Tie
3	8181948	1/2" Nylon Flanged Bearing	28	85607223	Reverse Switch Cover
4	8181675	Pedal	29	85607129	Switch Assembly
5	85606972	Pedal Spacer	30	85606977	M5 x 0.8 -12 SHC Screw
6	85607347	Pedal Spacer	31	85606973	Actuator Switch Lever
7	8120469	Hitch Clip Pin	32	8107635	Washer
8	8181977	3/16 x 1-1/4 Clevis Pin	33	8181369	0.250-20 Nylock Nut
9	8111609	Hair Pin Cotter	34	8113944	M4-0.7 x 10 HHMS
10	8301121	Washer	35	8114010	Washer
11	8183398	Pedal Shaft	36	85606879	Valve
12	85607121	Pedal Valve Stopper	37	85607170	8MM x 1/4NPT Straight Fitting
13	8181708	Pedal Extension Spring	38	85607181	Spacer Valve
14	85606933	Bracket Guide	39	8103737	Release Valve
15	8143168	1/4-20 x 3/4 Whiz Lock HHCS	40	85607183	#10-24 x 1.5 SHCS Screw
16	8181369	1/4-20 Hex Nut, Znc	41	8184675	Oil Injector Assembly
17	8182363	Electrical Switch Extension Bracket	42	8105615	Muffler
18	8182743	10-24 x 3/8 SHCS Screw Gr.8	43	8184467	1/4 NPT, 3/8" Fitting
19	8181699	Lever Switch Assembly	44	8184256	90° EL Fitting
20	8182682	#10-24 Reversible Lock Nut	45	*85607173	Motor Cable Assembly
21	8181984	1/4-20 HHCS Screw Gr.5	46	*85607172	Power Cord Assembly
22	8181989	10-24 x 3/8 SHCS Screw Gr.8	47	8181695	Cam Mounting Block
23	85606930	Pedal Valve Bracket Assembly	48	8181981	5/16" Wave Washer
24	85607182	Pedal Valve with Oil Injector	49	8181696	Lever Switch Assembly
25	85607198	Pedal Valve Assembly			

* Not Shown

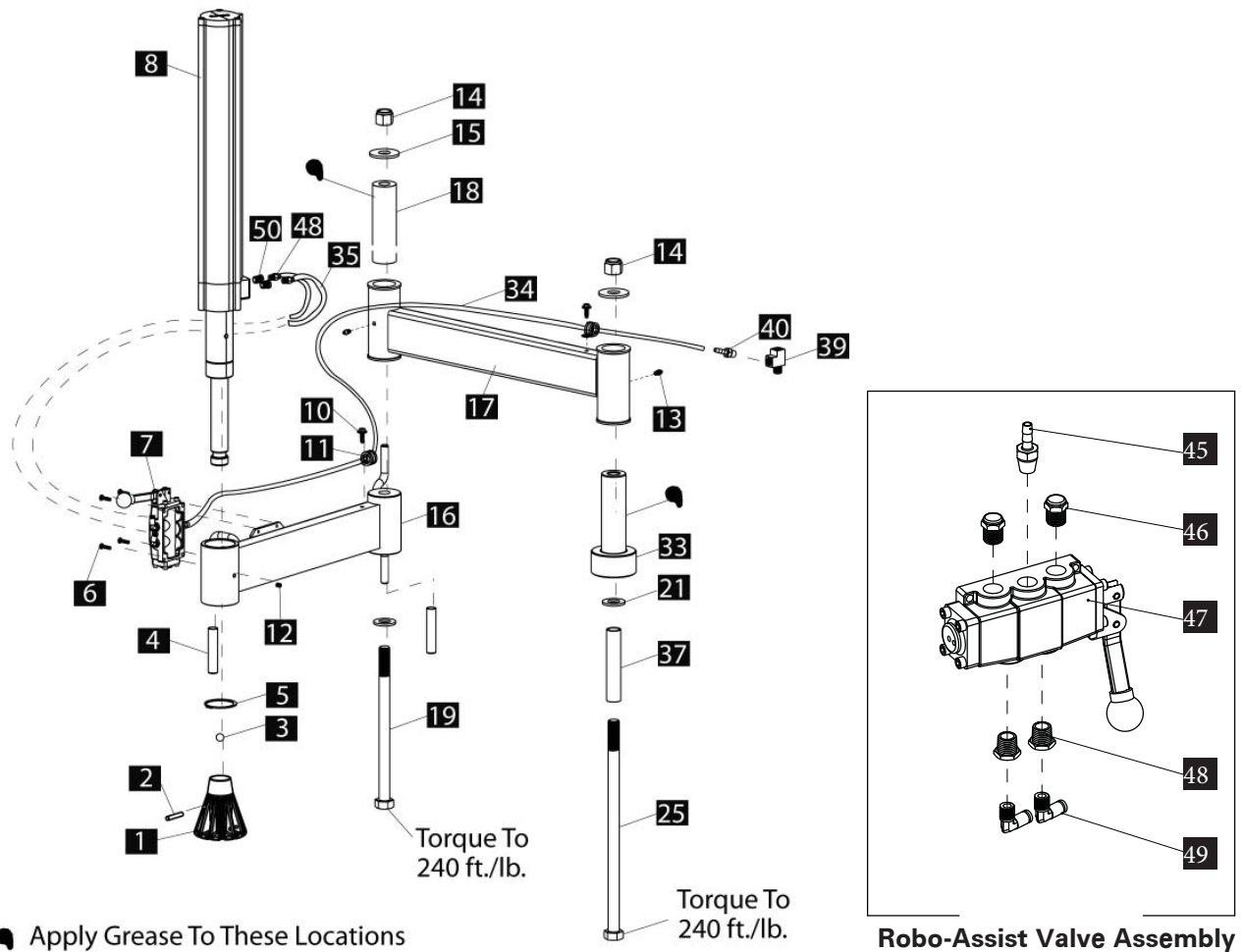
Table Top & Shaft Housing Assemblies

Item No	Part No.	Description
1	85606967	M12 x 1.75 SHCS Screw
2	85606968	Hub
3	8183476	6 x 16mm Roll Pin
4	85607212	Slide Stopper
5	85606865	Weldment Plate
6	8181677	Rim Clamp
7	85606898	Carrier Clamp
8	85607264	1/16-27 NPT 90° Elbow
9	85606904	Carrier Slide W/C
10	85606916	M12 Spring Washer
11	85606918	Pivot Link Sleeve
12	85606915	M12 1.75 x 30 HHCS Bolt
13	85606907	Carrier/Slide Plate
14	85607010	Cylinder Assembly
15	85606919	OD ϕ 0.469 Ext. Retaining Ring
16	85606920	Flat Washer
17	85000088	1/4NPT x 8MM Ell Fitting
18	85606913	Pivot Link
19	85606914	M12 x 1.75 x 90mm HHCS Bolt (21" Clamp)
	85607648	M12 x 1.75 x 40mm HHCS Bolt (24" Clamp)
20	85606910	Pivot Plate
21	85606971	External Retaining Ring
22	940689	M6-1 x 30MM SHCS Screw
23	85607133	Rotating Union
24	85606969	Taper Key
25	85606979	M10 x 1.5 HHCS Bolt
26	85606982	M10 Plain Washer
27	85607871	Gear Box Transmission
28	85607342	M10 Whiz Lock Hex Nut
29	8180047	Motor Belt
30	8184674	Motor Pulley
31	85607361	M10 Cage Nut
32	85607466	Motor Mount Bracket
33	85607361	M10 Cage Nut
34	85607008	Motor, 115V, 60Hz, 1Ph
	8182621	Motor, 220V, 50Hz, 1Ph
	8184691	Motor, 115V, 60Hz, 1Ph, CSA
35	85607258	M10 x 60 HHCS, Gr.8.8
36	85607869	1.75 x 25mm M12, FHSC Screw
37	85608643	Clevis Pin
38	85607647	Top Carrier (24" Clamp)
39	85608644	Circle Cotter Pin
40	85607646	Bottom Carrier
41	85609139	Grommet (85607008 Motor only)
42	85609311	M8 x 1.25 x 40mm HHCS Screw
43	8107635	5/16 Plain Washer



APPLY GREASE TO THESE LOCATIONS

Robo-Assist™ Assembly



ITEM	PART NO.	DESCRIPTION
1	85607622	Plastic Hold Down Foot
2	905563	Roll Pin, 1/4" Dia x 1-1/2"
3	8301017	Dia. Steel Ball, 1/2"
4	7000230	Rubber Hand Grip, 1/2"
5	8183637	2" Ext. Retaining Ring
6	8181983	10-24 x 3/4 Lg. BHSCS
7	***	Robo-Assist Valve Assembly
8	85608883	Cylinder Assembly 2.5" Diameter
9	8181996	1/4 NPT x 1/8 Tube St. Fitting
10	8106301	1/4-20 x 3/4" HWHST Screw
11	8182044	Neoprene Cushion Clamp
12	8183649	1/4-20 x 5/16" Soc Hd Set Screw
13	8184226	1/4-28 Grease Fitting
14	8182016	3/4-10 Hex Nylock Lock Nut
15	8100994	Flat Washer, 3/4" x 2" OD
16	8560761802	Front Arm Weldment
17	8560761901	Rear Arm Weldment
18	8181038	Swing Arm Pivot Pin
19	8183703	3/4-10 x 10-1/2" Hex HD Cap Srw
21	8182457	Flat Washer, 3/4 SAE x 1-1/2" OD

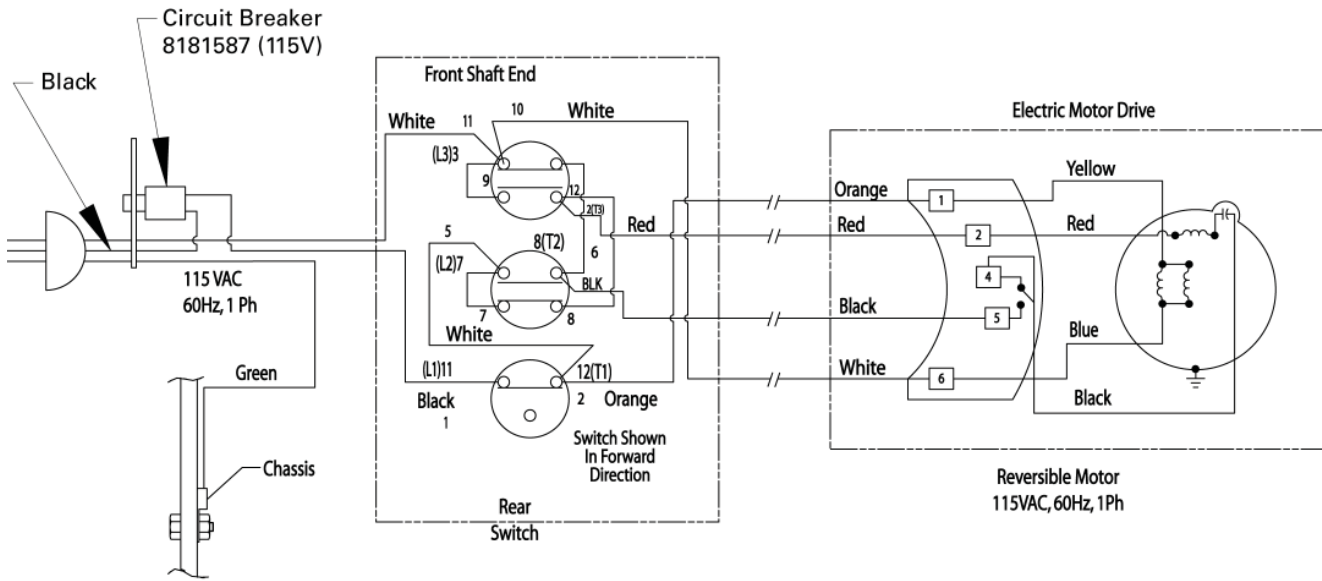
ITEM	PART NO.	DESCRIPTION
25	8183635	Screw, 3/4-10 x 14, HHCS, Gr.5
33	8184208	Pivot Pin Spacer
34	*	Hose, Rubber, 1/4", 58" Black
35	*	Plastic Tube, 1/8 x 6"
37	85607633	Swing Arm Sleeve
39	871101642	1/4 NPTM x 1/4 F Straight Fitting
40	8000378	1/4 NPT Brass Straight Fitting
45	8000378	Brass Straight Fitting, 1/4 NPT
46	8105615	Small Muffler
47	8185585	3 Position Valve
48	8109481	RDCR Fitting, 1/4 NPT x 1/8 NPT
49	8181997	Male Elbow, 1/8 NPT x 1/8"

* Hose Reels

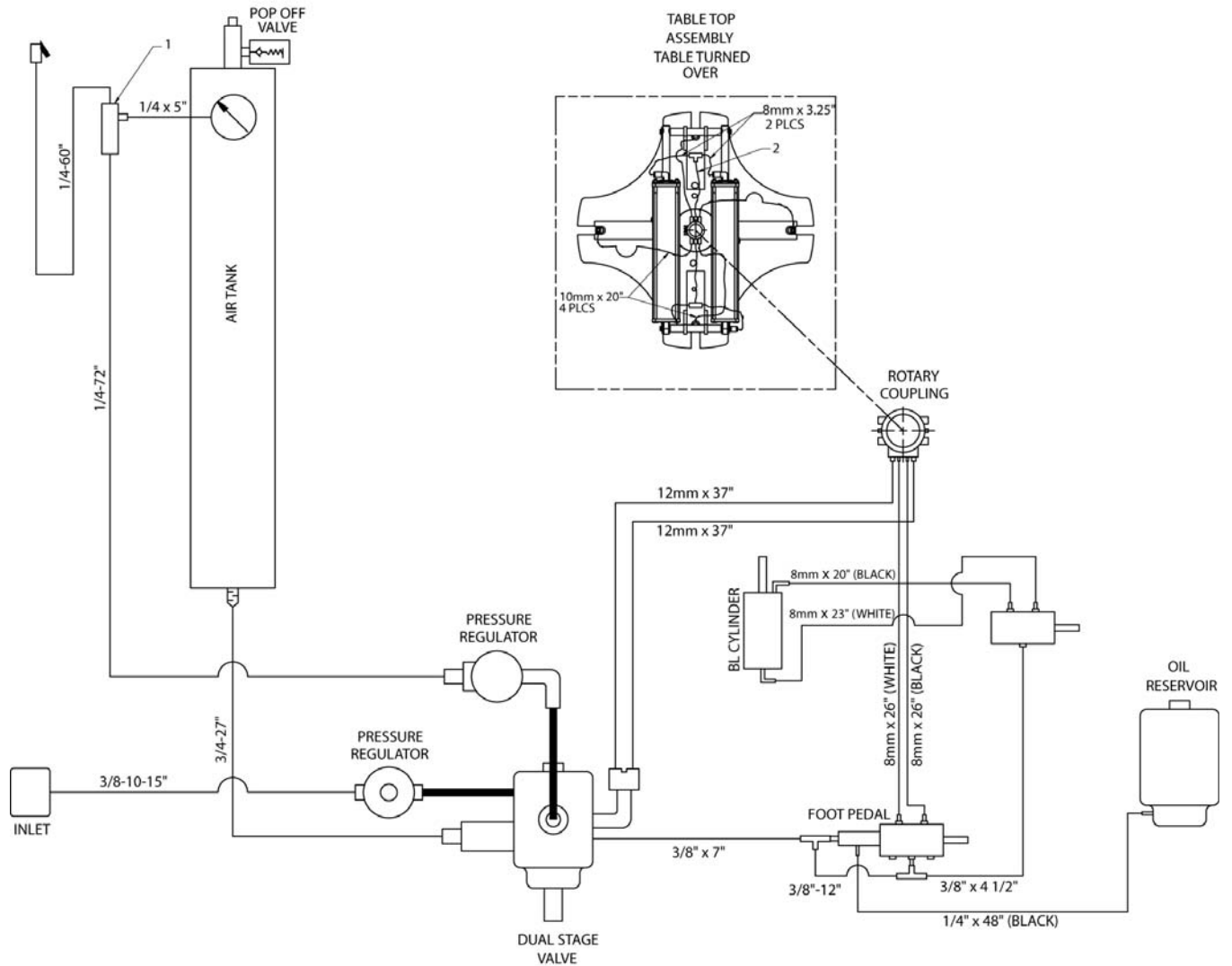
LENGTH	PART NO.	DESCRIPTION
50-ft.	85000375	1/4" ID x 1/2" OD Black Rubber Hose
50-ft.	85000376	1/8" OD x 0.25 Plastic Tube

Electrical Diagram

115 V 60Hz



Pneumatic Diagram



Hose Reels		
Length	Part No.	Description
25-ft.	85607423	8mm OD, White Plastic Tube
80-ft.	85000380	8mm OD, Black Plastic Tube
25-ft.	85607426	12mm OD, Plastic Tube
80-ft.	85000378	3/4" ID x 1.156" OD, Red Rubber Hose
50-ft.	85000377	3/8" ID x 11/16" OD, Red Rubber Hose
50-ft.	85000375	1/4" ID x 1/2" OD, Red Rubber Hose
Item No.	Part No.	Description
1	85607311	1/4" Tee Fitting
2	85607882	8mm OD, Plastic Coil Hose Assy

Baseline™ Tire Changer

Oil Injector Maintenance

The oil injector typically requires annual service. The oil level in the oil reservoir tank should be checked regularly.

1. Add oil to the oil reservoir tank if the fluid level in the tank is below a quarter full. Remove the cap from the oil reservoir tank and add Chevron Regal® R & O 32 oil to the full line. Replace the cap and clean up any spilled oil.

Important: If the hose between the reservoir and injector is ever empty of oil, an air lock will form. After filling the reservoir tank, the line must be bled of air at the injector connection as follows:

- a. Remove the side panel and locate the oil injector.
- b. Loosen the bleeder plug until oil drips from the plug.
- c. Retighten bleeder plug.
- d. Cycle the clamp valve a few times checking for oil and air leaks.
- e. Test the machine for full function before returning the machine to operation.

Transmission Lubrication

Check the fluid level in the tabletop transmission with the oil check dipstick. If fluid shows on the dipstick, it is properly filled. If no fluid is present on the dipstick, add a high quality SAE 80/90 gear lubricant. Add lubricant and check the level. Stop adding lubricant when it shows on the dipstick.

Air Gauge Check

Inflate a standard 15" passenger car tire/wheel assembly to 32 PSI. Use a high quality stick-type pressure gauge to verify the pressure. Attach the tire changer's inflation hose to the valve stem and check the pressure reading on the air gauge. If it does not read 32 PSI, replace the gauge.

Danger, Warning, Caution, and Instructional Decals

Always make the cleaning of these important decals a part of your regular maintenance routine. If they are damaged or illegible, replace them immediately. Your safety and the safety of others is involved!

Regal® is a trademark of Chevron Products Company